

APR-JUN

2012

McLean BASIS *plus*™

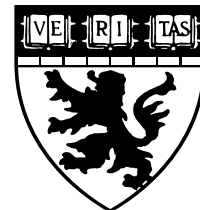
Sample Hospital

Report for April thru June 2012

- BASIS-24®

McLean Hospital

115 Mill Street
Belmont, MA 02478



Department of Mental Health Services Evaluation

Tel: 617-855-2424
Fax: 617-855-2948

Website: www.ebasis.org
Email: basisadmin@mclean.harvard.edu

BASIS-24: IP :

Sample Hospital, April 2012 to June 2012 (LoC : In Patient)

BASIS-24

The BASIS-24 is a twenty-four item patient self-report questionnaire designed to assess treatment outcomes by measuring symptoms and functional difficulties experienced by consumers seeking mental health services. The BASIS-24 is administered at the beginning of a treatment episode, with repeat assessments obtained at desired intervals to assess change during or following treatment. All items are answered on a 5-point scale with different sets of response options tailored to particular sets of questions. Scores are computed for the overall BASIS-24, as well as for six domains: Depression and Functioning, Interpersonal Relationships, Psychosis, Substance Abuse, Emotional Lability, and Self-harm.

Clinical and Organizational Applications

The BASIS-24 allows you to evaluate clinical and program effectiveness from the patient perspective with the statistical accuracy necessary today. Results can be used to meet accreditation requirements, satisfy insurers and other payers, and—most importantly—deliver high quality behavioral health care to the community you serve.

Program Comparison and Assessment

Aggregate results are useful for comparing programs and tracking changes in outcomes over time.

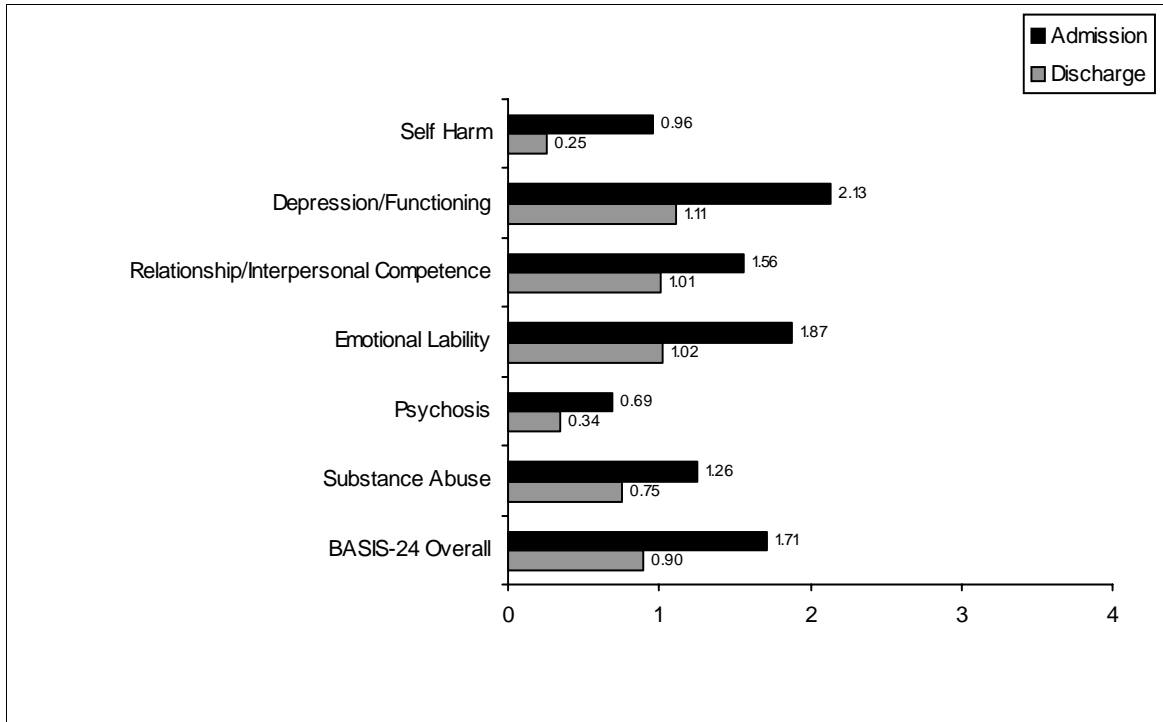
Program Planning

Baseline assessment can help guide program planning by informing administrators and clinical leaders about the kinds of symptoms and problems presented by patients; this can also guide staff training and recruitment efforts. Results can also be used to identify the prevalence of types of symptoms and problems in specific populations, e.g., self-reported substance abuse among adult psychiatric inpatients not admitted for nor diagnosed with a substance abuse

BASIS-24 RESULTS:

Figure 1 - BASIS-24 SCORES AT ADMISSION AND DISCHARGE.....	4
Figure 2 - COMPARISON CHART: BASIS-24 - OVERALL CHANGE SCORE.....	5
Figure 3 - COMPARISON CHART: BASIS-24 - SELF HARM CHANGE SCORE.....	6
Figure 4 - COMPARISON CHART: BASIS-24 - DEPRESSION/FUNCTIONING CHANGE SCORE.....	7
Figure 5 - COMPARISON CHART: BASIS-24 - RELATIONSHIP/INTERPERSONAL COMPETENCE.....	8
Figure 6 - COMPARISON CHART: BASIS-24 - EMOTIONAL LIABILITY CHANGE SCORE.....	9
Figure 7 - COMPARISON CHART: BASIS-24 – PSYCHOSIS CHANGE SCORE.....	10
Figure 8 - COMPARISON CHART: BASIS-24 – SUBSTANCE ABUSE CHANGE SCORE.....	11
Figure 9 - CONTROL CHART: BASIS-24 - OVERALL CHANGE SCORE.....	12
Figure 10 - CONTROL CHART: BASIS-24 - SELF HARM CHANGE SCORE.....	13
Figure 11 - CONTROL CHART: BASIS-24 - DEPRESSION/FUNCTIONING CHANGE SCORE.....	14
Figure 12 - CONTROL CHART: BASIS-24 - RELATIONSHIP/INTERPERSONAL COMPETENCE.....	15
Figure 13 - CONTROL CHART: BASIS-24 - EMOTIONAL LIABILITY CHANGE SCORE.....	16
Figure 14 - CONTROL CHART: BASIS-24 - PSYCHOSIS CHANGE SCORE.....	17
Figure 15 - CONTROL CHART: BASIS-24 - SUBSTANCE ABUSE CHANGE SCORE.....	18
Figure 16 - PATIENT CHARACTERISTICS.....	19

Figure 1 - BASIS-24 SCORES AT ADMISSION AND DISCHARGE (Mean)
N= 326

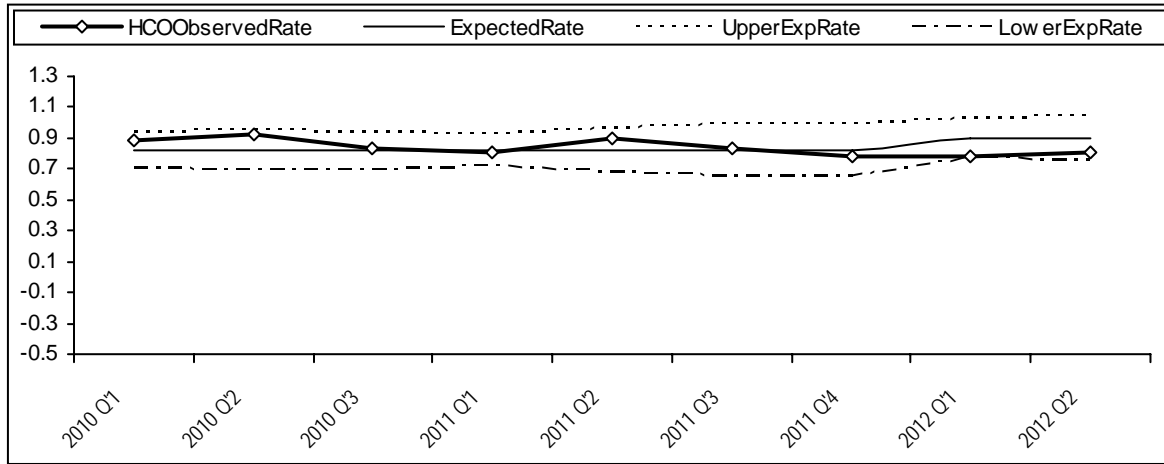


Level Of Difficulty: 0=none 1=a little 2=moderate 3=quite a bit 4=extreme

BASIS-24 COMPARISON GROUP SCORES BASED ON 14579 CASES FROM 13 DIFFERENT ORGANIZATIONS

Measure	Admission		Discharge	
	Mean	Std. Dev.	Mean	Std. Dev.
Self Harm	1.41	1.26	0.51	0.82
Depression/Functioning	2.43	1.01	1.32	0.83
Relationship/Interpersonal Competence	1.74	0.95	1.29	0.97
Emotional Lability	2.15	1.05	1.30	0.93
Psychosis	0.97	1.05	0.53	0.79
Substance Abuse	1.27	1.26	0.85	0.95
BASIS-24 Overall	2.02	0.77	1.16	0.65

Figure 2 - COMPARISON CHART: BASIS-24 - TOTAL CHANGE SCORE
BASIS-24 at admission minus BASIS-24 at discharge



Comparison Chart shows your health care organization's (HCO) observed range each quarter compared to expected performance based on the comparison group. The expected range (performance) is calculated using a 99% confidence interval for your observed performance. This formula takes into consideration the size of your patient population. The expected rate is the comparison group value.

Table of Comparison Data Using Z-score: BASIS-24 Total Change Score
Quarterly Performance Compared to TJC Performance Guidelines

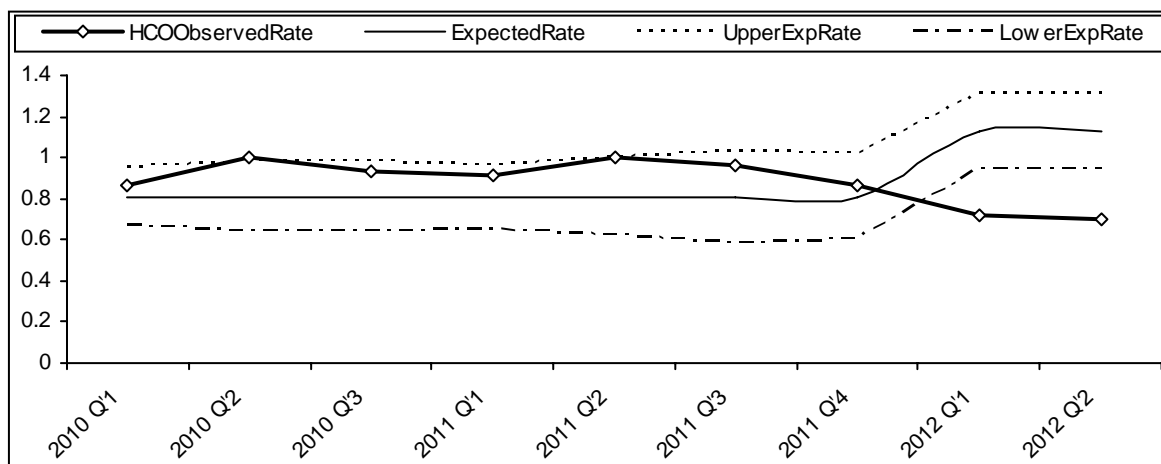
Qtr/Year	HCO's Number of cases (N)	HCO's Observed Value (Xo)	HCO's StdDev of Observed Value (So)	Expected Value (Xe)1	Z-score2	Outlier status3
2010 Q'1	534	0.89	1.00	0.82	1.6059	None
2010 Q'2	411	0.93	1.00	0.82	2.1767	None
2010 Q'3	411	0.83	0.96	0.82	0.1697	None
2011 Q'1	437	0.81	0.84	0.82	-0.1996	None
2011 Q'2	276	0.90	0.94	0.82	1.3339	None
2011 Q'3	283	0.84	1.13	0.82	0.2920	None
2011 Q'4	240	0.78	1.04	0.82	-0.5811	None
2012 Q'1	308	0.78	0.90	0.90	-2.3900	None
2012 Q'2	326	0.81	1.01	0.90	-1.6421	None

1 Expected value (Xe) is the comparison group mean

2 Z-score (<-2.576 or >+2.576) indicates whether Xo is an outlier, and if so, whether Xo is desirable or undesirable

3 Outlier status may be NONE, DESIRABLE, or UNDESIRABLE. NONE: Xo is within current TJC performance guidelines. Z-Score between -2.576 and 2.576. Indicates expected performance; DESIRABLE: Xo exceeds current TJC performance guidelines. Zscore>+2.576. May indicate excellent performance. UNDESIRABLE: Xo does not meet TJC performance guidelines. (Z-Score <-2.576. May indicate opportunity for improvement.

Figure 3 - COMPARISON CHART: BASIS-24 - SELF HARM CHANGE SCORE
BASIS-24 at admission minus BASIS-24 at discharge



Comparison Chart shows your health care organization's (HCO) observed range each quarter compared to expected performance based on the comparison group. The expected range (performance) is calculated using a 99% confidence interval for your observed performance. This formula takes into consideration the size of your patient population. The expected rate is the comparison group value.

Table of Comparison Data Using Z-Score: Basis-24 - Self Harm Change Score
Quarterly Performance Compared to TJC Performance Guidelines

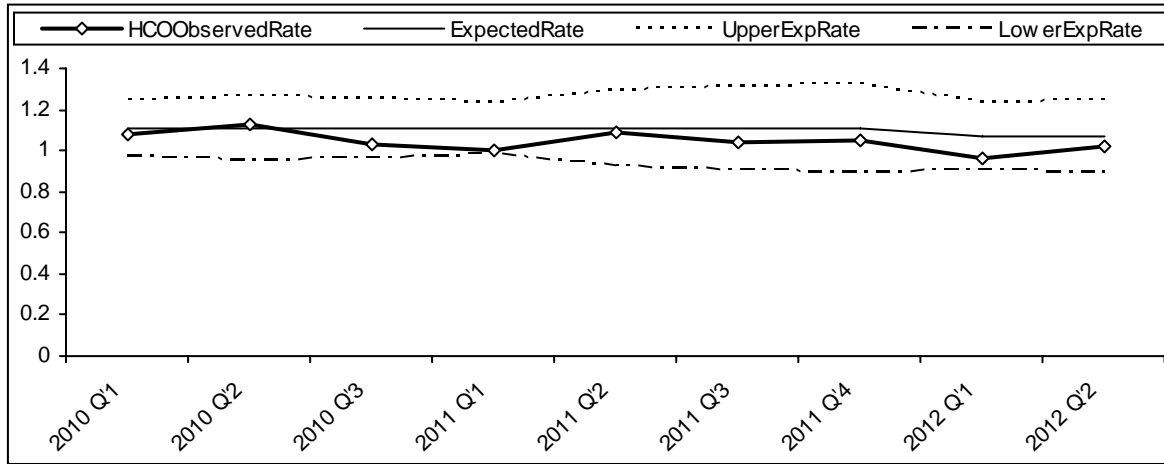
Qtr/Year	HCO's Number of cases (N)	HCO's Observed Value (Xo)	HCO's StdDev of Observed Value (So)	Expected Value (Xe) ¹	Z-score ²	Outlier status ³
2010 Q'1	534	0.87	1.27	0.81	1.0114	None
2010 Q'2	411	1.00	1.33	0.81	2.9061	Desirable
2010 Q'3	411	0.93	1.35	0.81	1.8175	None
2011 Q'1	437	0.92	1.25	0.81	1.8054	None
2011 Q'2	276	1.00	1.22	0.81	2.5726	None
2011 Q'3	283	0.96	1.47	0.81	1.7020	None
2011 Q'4	240	0.87	1.24	0.81	0.7208	None
2012 Q'1	308	0.72	1.24	1.13	-5.8525	Undesirable
2012 Q'2	326	0.70	1.28	1.13	-6.0444	Undesirable

¹ Expected value (Xe) is the comparison group mean.

² Z-score (<-2.576 or >+2.576) indicates whether Xo is an outlier, and if so, whether Xo is desirable or undesirable

³ Outlier status may be NONE, DESIRABLE, or UNDESIRABLE. NONE: Xo is within current TJC performance guidelines. Z-Score between -2.576 and 2.576. Indicates expected performance; DESIRABLE: Xo exceeds current TJC performance guidelines. Zscore>+2.576. May indicate excellent performance. UNDESIRABLE: Xo does not meet TJC performance guidelines. (Z-Score <-2.576. May indicate opportunity for improvement.

Figure 4 - COMPARISON CHART: BASIS-24 –DEPRESSION/FUNCTIONING CHANGE SCORE
BASIS-24 at admission minus BASIS-24 at discharge



Comparison Chart shows your health care organization's (HCO) observed range each quarter compared to expected performance based on the comparison group. The expected range (performance) is calculated using a 99% confidence interval for your observed performance. This formula takes into consideration the size of your patient population. The expected rate is the comparison group value.

Table Of Comparison Data Using Z-Score: BASIS-24 – Depression/Functioning Change Score
Quarterly Performance Compared to TJC Performance Guidelines

Qtr/Year	HCO's Number of cases (N)	HCO's Observed Value (Xo)	HCO's StdDev of Observed Value (So)	Expected Value (Xe)1	Z-score2	Outlier status3
2010 Q'1	534	1.08	1.21	1.11	-0.6342	None
2010 Q'2	411	1.13	1.21	1.11	0.2698	None
2010 Q'3	411	1.03	1.14	1.11	-1.4369	None
2011 Q'1	437	1.00	1.05	1.11	-2.2521	None
2011 Q'2	276	1.08	1.20	1.11	-0.3592	None
2011 Q'3	283	1.04	1.32	1.11	-0.8737	None
2011 Q'4	240	1.05	1.28	1.11	-0.6997	None
2012 Q'1	308	0.96	1.11	1.07	-1.6919	None
2012 Q'2	326	1.02	1.22	1.07	-0.6822	None

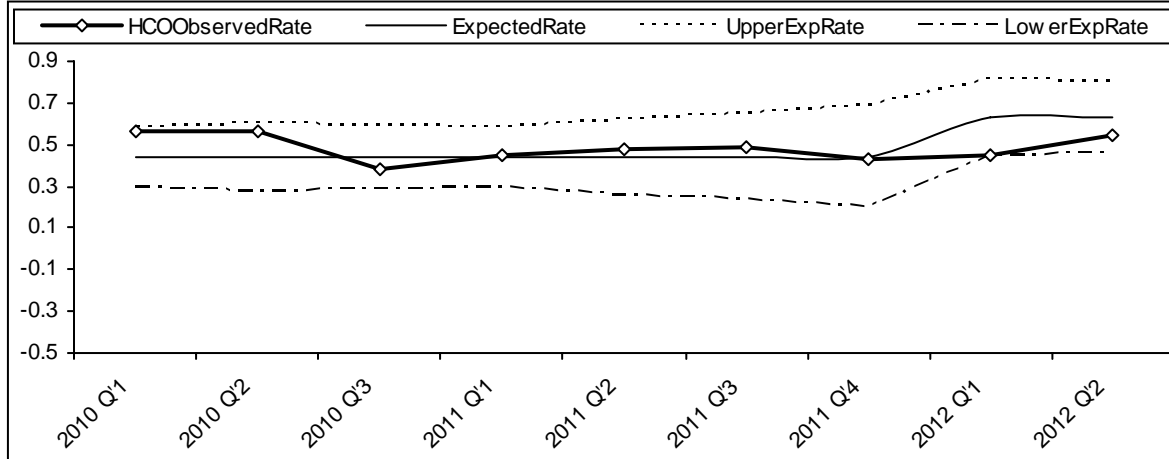
1 Expected value (Xe) is the comparison group mean.

2 Z-score (<-2.576 or >+2.576) indicates whether Xo is an outlier, and if so, whether Xo is desirable or undesirable

3 Outlier status may be NONE, DESIRABLE, or UNDESIRABLE. NONE: Xo is within current TJC performance guidelines. Z-Score between -2.576 and 2.576. Indicates expected performance; DESIRABLE: Xo exceeds current TJC performance guidelines. Zscore>+2.576. May indicate excellent performance. UNDESIRABLE: Xo does not meet TJC performance guidelines. (Z-Score <-2.576. May indicate opportunity for improvement.

Figure 5 - COMPARISON CHART: BASIS-24 –RELATIONSHIP/INTERPERSONAL COMPETENCE CHANGE SCORE

BASIS-24 at admission minus BASIS-24 at discharge



Comparison Chart shows your health care organization's (HCO) observed range each quarter compared to expected performance based on the comparison group. The expected range (performance) is calculated using a 99% confidence interval for your observed performance. This formula takes into consideration the size of your patient population. The expected rate is the comparison group value.

Table of Comparison Data Using Z-score: BASIS-24 – Relationship/Interpersonal Competence Change Score
Quarterly Performance Compared to TJC Performance Guidelines

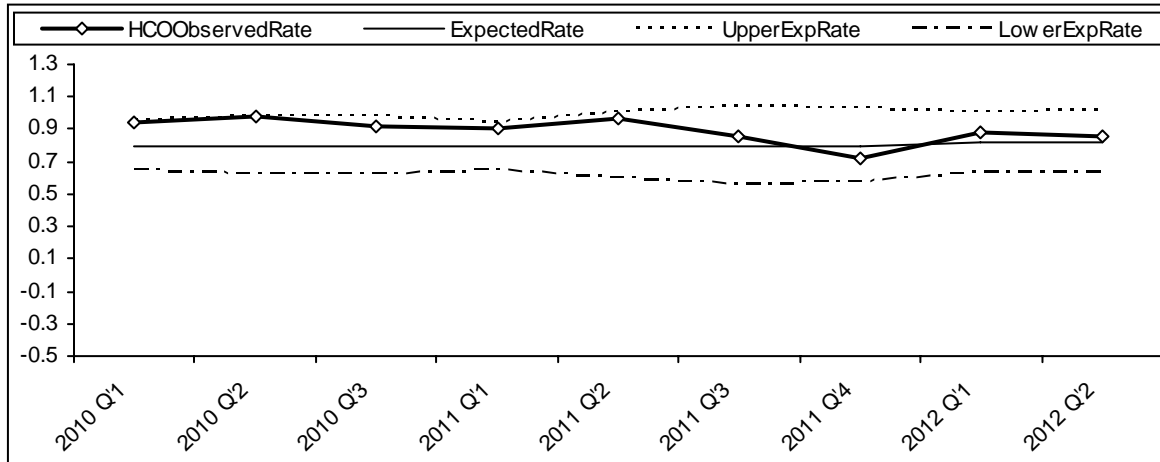
Qtr/Year	HCO's Number of cases (N)	HCO's Observed Value (Xo)	HCO's StdDev of Observed Value (So)	Expected Value (Xe)1	Z-score2	Outlier status3
2010 Q'1	534	0.57	1.31	0.44	2.2151	None
2010 Q'2	411	0.56	1.26	0.44	1.9480	None
2010 Q'3	411	0.38	1.24	0.44	-0.9453	None
2011 Q'1	437	0.45	1.14	0.44	0.1945	None
2011 Q'2	276	0.48	1.17	0.44	0.5549	None
2011 Q'3	283	0.49	1.34	0.44	0.6133	None
2011 Q'4	240	0.43	1.47	0.44	-0.1371	None
2012 Q'1	308	0.45	1.25	0.63	-2.5565	None
2012 Q'2	326	0.55	1.23	0.63	-1.2079	None

1 Expected value (Xe) is the comparison group mean

2 Z-score (<-2.576 or >+2.576) indicates whether Xo is an outlier, and if so, whether Xo is desirable or undesirable.

3 Outlier status may be NONE, DESIRABLE, or UNDESIRABLE. NONE: Xo is within current TJC performance guidelines. Z-Score between -2.576 and 2.576. Indicates expected performance; DESIRABLE: Xo exceeds current TJC performance guidelines. Zscore>+2.576. May indicate excellent performance. UNDESIRABLE: Xo does not meet TJC performance guidelines. (Z-Score <-2.576. May indicate opportunity for improvement.

Figure 6 -COMPARISON CHART: BASIS-24 - EMOTIONAL LABILITY CHANGE SCORE
BASIS-24 at admission minus BASIS-24 at discharge



Comparison Chart shows your health care organization's (HCO) observed range each quarter compared to expected performance based on the comparison group. The expected range (performance) is calculated using a 99% confidence interval for your observed performance. This formula takes into consideration the size of your patient population. The expected rate is the comparison group value.

Table of Comparison Data Using Z-score: Basis-24 Emotional Lability Change Score
Quarterly Performance Compared to TJC Performance Guidelines

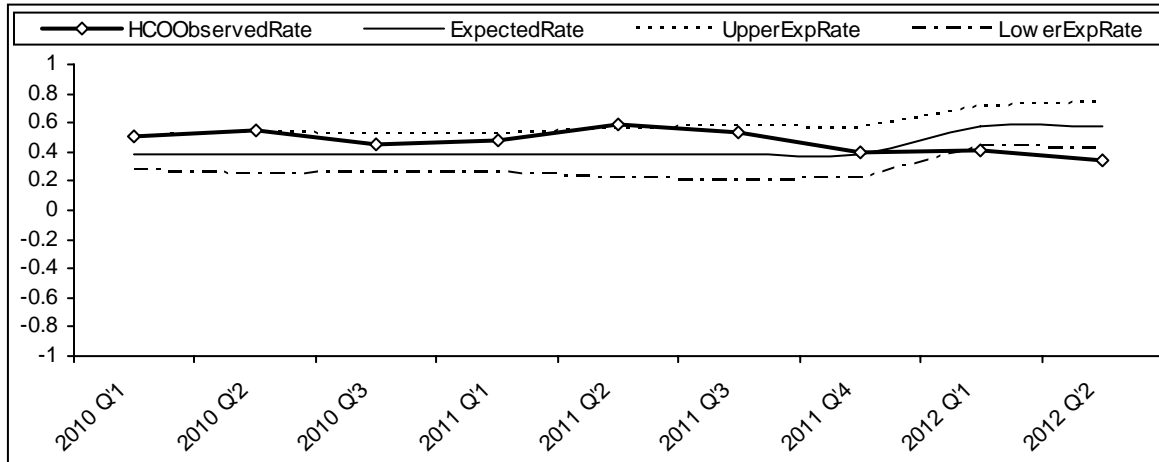
Qtr/Year	HCO's Number of cases (N)	HCO's Observed Value (Xo)	HCO's StdDev of Observed Value (So)	Expected Value (Xe)1	Z-score2	Outlier status3
2010 Q'1	534	0.94	1.35	0.80	2.4608	None
2010 Q'2	411	0.99	1.37	0.80	2.7468	Desirable
2010 Q'3	411	0.91	1.40	0.80	1.6614	None
2011 Q'1	437	0.91	1.20	0.80	1.8699	None
2011 Q'2	276	0.96	1.32	0.80	2.0643	None
2011 Q'3	283	0.86	1.54	0.80	0.6700	None
2011 Q'4	240	0.72	1.34	0.80	-0.8947	None
2012 Q'1	308	0.88	1.27	0.82	0.8796	None
2012 Q'2	326	0.85	1.34	0.82	0.4562	None

1 Expected value (Xe) is the comparison group mean.

2 Z-score (<-2.576 or >+2.576) indicates whether Xo is an outlier, and if so, whether Xo is desirable or undesirable

3 Outlier status may be NONE, DESIRABLE, or UNDESIRABLE. NONE: Xo is within current TJC performance guidelines. Z-Score between -2.576 and 2.576. Indicates expected performance; DESIRABLE: Xo exceeds current TJC performance guidelines. Zscore>+2.576. May indicate excellent performance. UNDESIRABLE: Xo does not meet TJC performance guidelines. (Z-Score <-2.576. May indicate opportunity for improvement.

Figure 7- COMPARISON CHART: BASIS-24 – PSYCHOSIS CHANGE SCORE
BASIS-24 at admission minus BASIS-24 at discharge



Comparison Chart shows your health care organization's (HCO) observed range each quarter compared to expected performance based on the comparison group. The expected range (performance) is calculated using a 99% confidence interval for your observed performance. This formula takes into consideration the size of your patient population. The expected rate is the comparison group value.

Table of Comparison Data Using Z-score: BASIS-24 – Psychosis Change Score
Quarterly Performance Compared to TJC Performance Guidelines

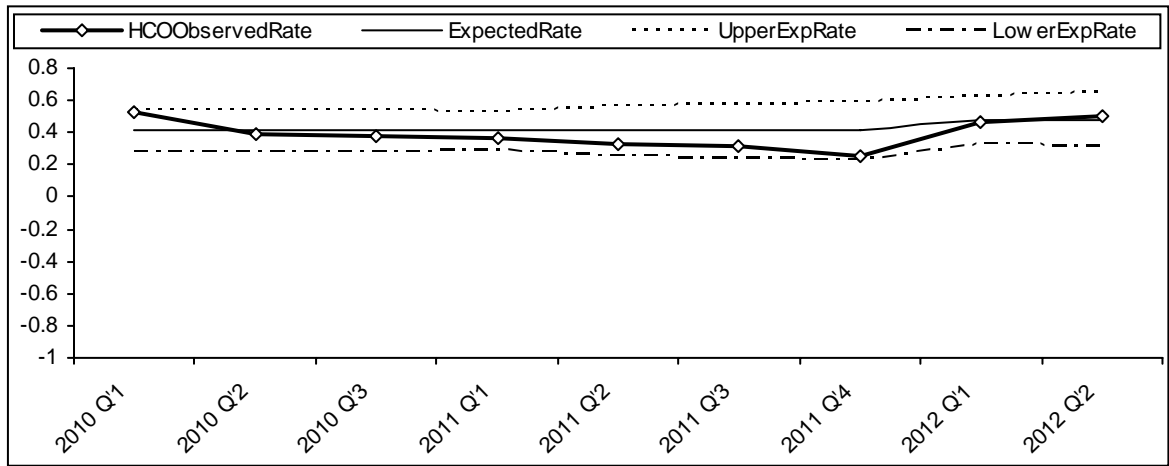
Qtr/Year	HCO's Number of cases (N)	HCO's Observed Value (Xo)	HCO's StdDev of Observed Value (So)	Expected Value (Xe)1	Z-score2	Outlier status3
2010 Q'1	534	0.51	1.06	0.39	2.5449	None
2010 Q'2	411	0.55	1.14	0.39	2.8793	Desirable
2010 Q'3	411	0.46	1.06	0.39	1.3004	None
2011 Q'1	437	0.49	1.05	0.39	1.8903	None
2011 Q'2	276	0.59	1.15	0.39	2.9347	Desirable
2011 Q'3	283	0.54	1.22	0.39	2.0658	None
2011 Q'4	240	0.40	1.05	0.39	0.1176	None
2012 Q'1	308	0.42	0.92	0.58	-3.1374	Undesirable
2012 Q'2	326	0.35	1.08	0.58	-3.8847	Undesirable

1 Expected value (Xe) is the comparison group mean.

2 Z-score (<-2.576 or >+2.576) indicates whether Xo is an outlier, and if so, whether Xo is desirable or undesirable

3 Outlier status may be NONE, DESIRABLE, or UNDESIRABLE. NONE: Xo is within current TJC performance guidelines. Z-Score between -2.576 and 2.576. Indicates expected performance; DESIRABLE: Xo exceeds current TJC performance guidelines. Zscore>+2.576. May indicate excellent performance. UNDESIRABLE: Xo does not meet TJC performance guidelines. (Z-Score <-2.576. May indicate opportunity for improvement.

Figure 8- COMPARISON CHART: BASIS-24 – SUBSTANCE ABUSE CHANGE SCORE
BASIS-24 at admission minus BASIS-24 at discharge



Comparison Chart shows your health care organization's (HCO) observed range each quarter compared to expected performance based on the comparison group. The expected range (performance) is calculated using a 99% confidence interval for your observed performance. This formula takes into consideration the size of your patient population. The expected rate is the comparison group value.

Table of Comparison Data Using Z-score: BASIS-24 – Substance Abuse Change Score
Quarterly Performance Compared to TJC Performance Guidelines

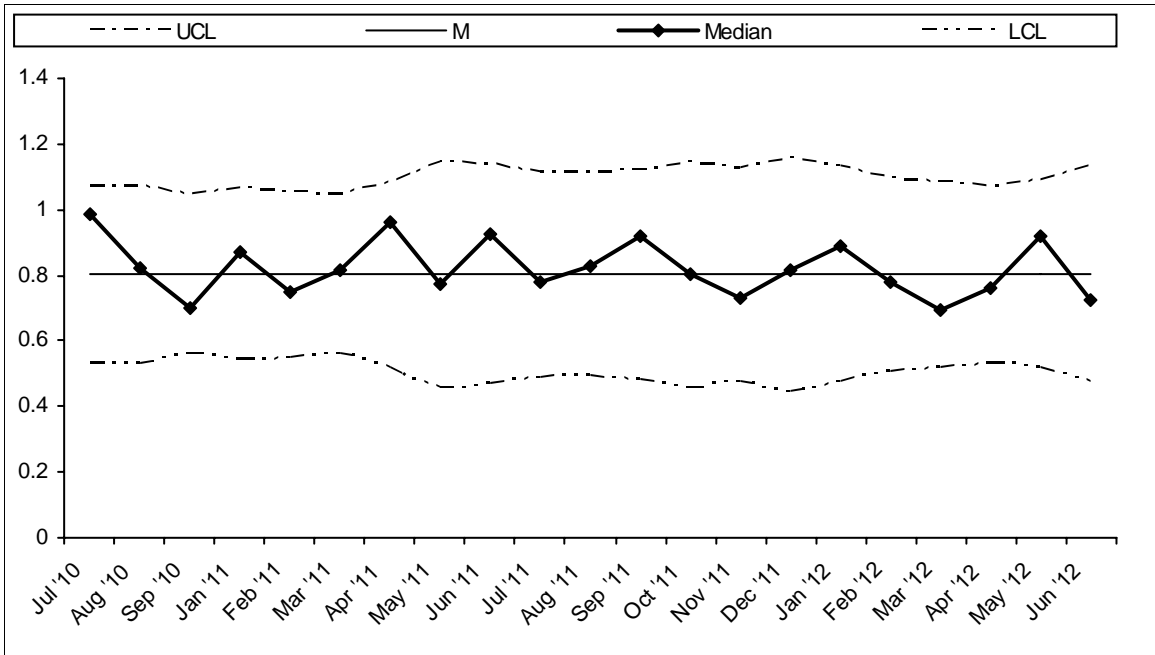
Qtr/Year	HCO's Number of cases (N)	HCO's Observed Value (Xo)	HCO's StdDev of Observed Value (So)	Expected Value (Xe) ¹	Z-score ²	Outlier status ³
2010 Q'1	534	0.53	1.21	0.41	2.3252	None
2010 Q'2	411	0.39	1.04	0.41	-0.3709	None
2010 Q'3	411	0.38	0.99	0.41	-0.5629	None
2011 Q'1	437	0.36	0.94	0.41	-1.0710	None
2011 Q'2	276	0.32	1.00	0.41	-1.4483	None
2011 Q'3	283	0.32	1.10	0.41	-1.4143	None
2011 Q'4	240	0.25	1.07	0.41	-2.3100	None
2012 Q'1	308	0.46	1.04	0.48	-0.3427	None
2012 Q'2	326	0.50	1.18	0.48	0.3804	None

¹ Expected value (Xe) is the comparison group mean.

² Z-score (<-2.576 or >+2.576) indicates whether Xo is an outlier, and if so, whether Xo is desirable or undesirable

³ Outlier status may be NONE, DESIRABLE, or UNDESIRABLE. NONE: Xo is within current TJC performance guidelines. Z-Score between -2.576 and 2.576. Indicates expected performance; DESIRABLE: Xo exceeds current TJC performance guidelines. Zscore>+2.576. May indicate excellent performance. UNDESIRABLE: Xo does not meet TJC performance guidelines. (Z-Score <-2.576. May indicate opportunity for improvement.

Figure 9 - CONTROL CHART BASIS-24 TOTAL CHANGE (X-chart)
BASIS-24 at admission minus BASIS-24 at discharge



Legend: X-chart:

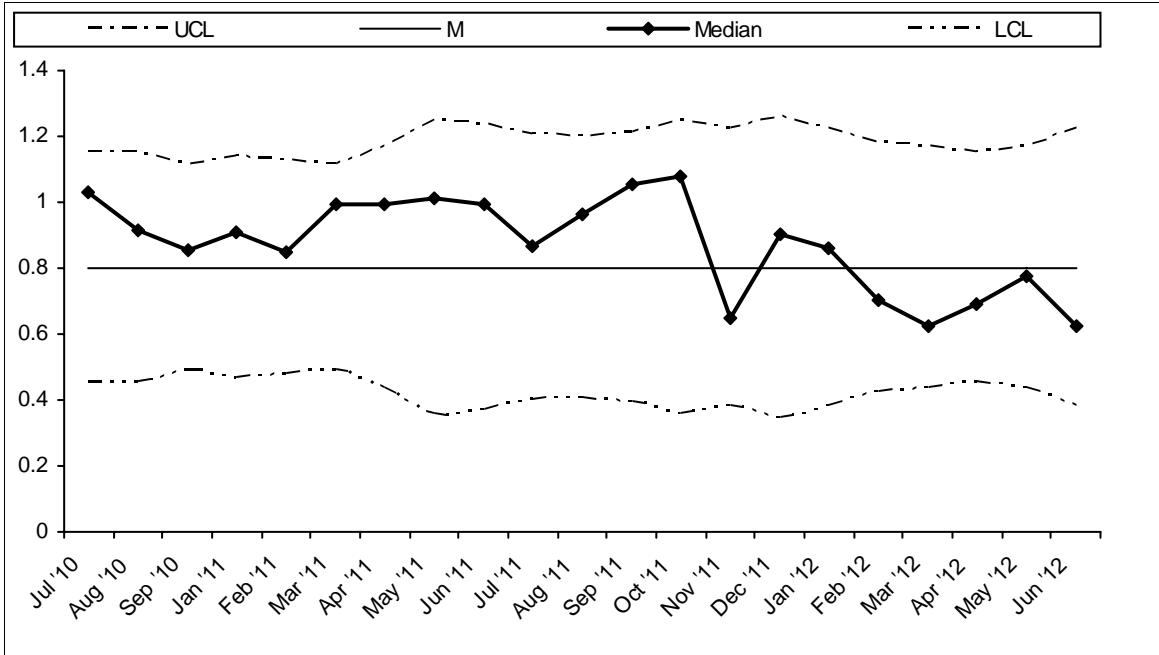
- Mean - Mean of observed values for a month
- M - Overall mean of observed values for all months together
- UCL - upper control limit
- LCL - lower control limit

TJC has established 3 tests to determine whether performance indicated on the X-chart is "in control."

- Test 1:** All monthly data points should be within three standard deviations of the average;
- Test 2:** No more than 7 consecutive monthly data points should be on one side of (above or below) the average;
- Test 3:** No more than 5 consecutive monthly data points should show a steady increase or decrease over time.

A measure in statistical control does not necessarily mean that performance is satisfactory. Results may be stable, yet still indicate poor or good performance. Once results are determined to be in statistical control, they should be compared to external comparison group using a Comparison Chart. If the X-chart indicates that performance is not "in control", the HCO should investigate to determine the underlying or root causes for why the process appears unstable and unpredictable.

Figure 10 - CONTROL CHART BASIS-24 SELF HARM (X-chart)
BASIS-24 at admission minus BASIS-24 at discharge



Legend: X-chart:

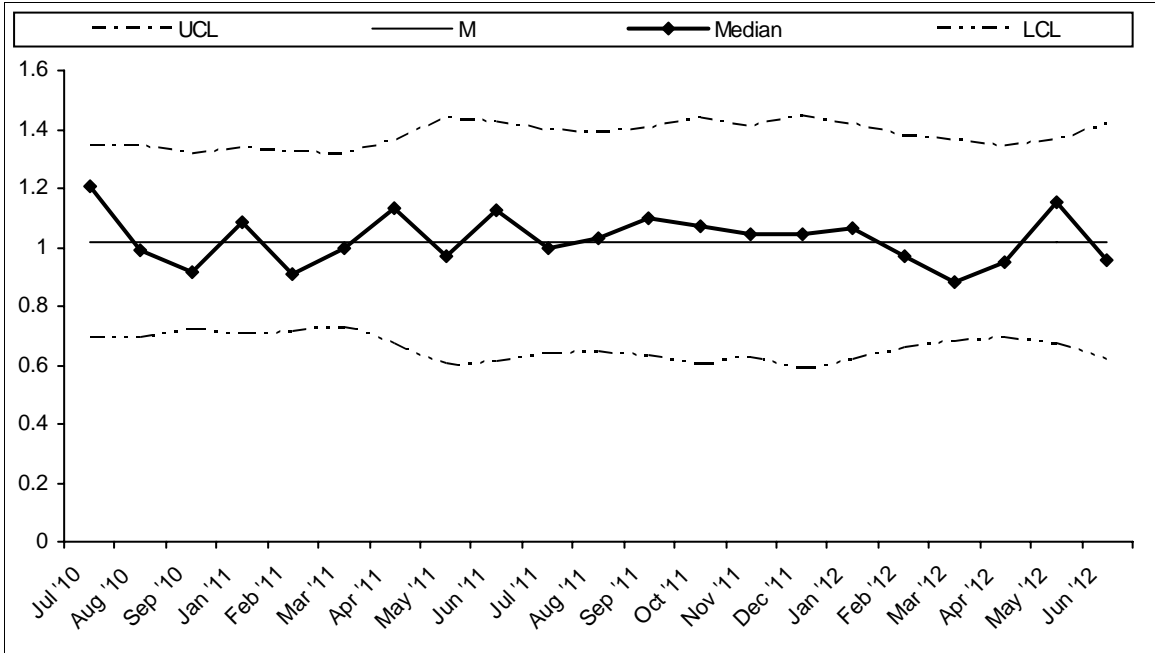
- Mean - Mean of observed values for a month
- M - Overall mean of observed values for all months together
- UCL - upper control limit
- LCL - lower control limit

TJC has established 3 tests to determine whether performance indicated on the M-chart is "in control."

- Test 1:** All monthly data points should be within three standard deviations of the average;
- Test 2:** No more than 7 consecutive monthly data points should be on one side of (above or below) the average;
- Test 3:** No more than 5 consecutive monthly data points should show a steady increase or decrease over time.

A measure in statistical control does not necessarily mean that performance is satisfactory. Results may be stable, yet still indicate poor or good performance. Once results are determined to be in statistical control, they should be compared to external comparison group using a Comparison Chart. If the X-chart indicates that performance is not "in control", the HCO should investigate to determine the underlying or root causes for why the process appears unstable and unpredictable.

Figure 11 - CONTROL CHART BASIS-24 DEPRESSION/FUNCTIONING (X-chart)
BASIS-24 at admission minus BASIS-24 at discharge



Legend: X-chart:

Mean - Mean of observed values for a month
 M - Overall mean of observed values for all months together
 UCL - upper control limit
 LCL - lower control limit

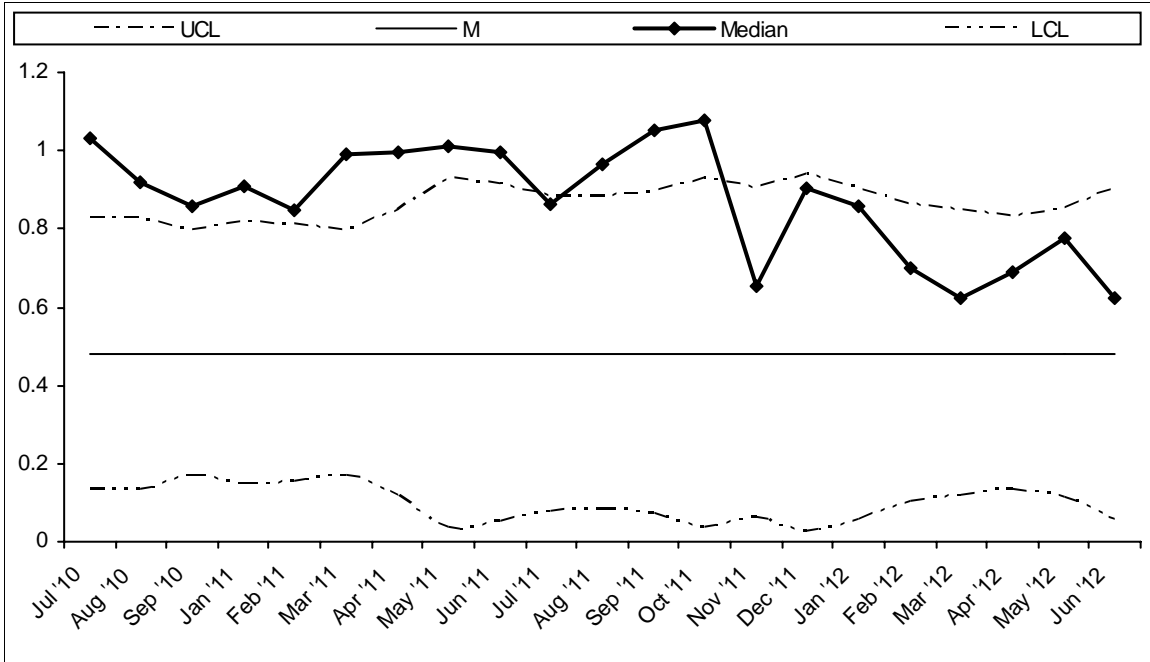
TJC has established 3 tests to determine whether performance indicated on the X-chart is "in control."

- Test 1:** All monthly data points should be within three standard deviations of the average;
- Test 2:** No more than 7 consecutive monthly data points should be on one side of (above or below) the average;
- Test 3:** No more than 5 consecutive monthly data points should show a steady increase or decrease over time.

A measure in statistical control does not necessarily mean that performance is satisfactory. Results may be stable, yet still indicate poor or good performance. Once results are determined to be in statistical control, they should be compared to external comparison group using a Comparison Chart. If the X-chart indicates that performance is not "in control", the HCO should investigate to determine the underlying or root causes for why the process appears unstable and unpredictable.

Figure 12 - CONTROL CHART BASIS-24 RELATIONSHIP/INTERPERSONAL COMPETENCE (X-chart)

BASIS-24 at admission minus BASIS-24 at discharge



Legend: X-chart:

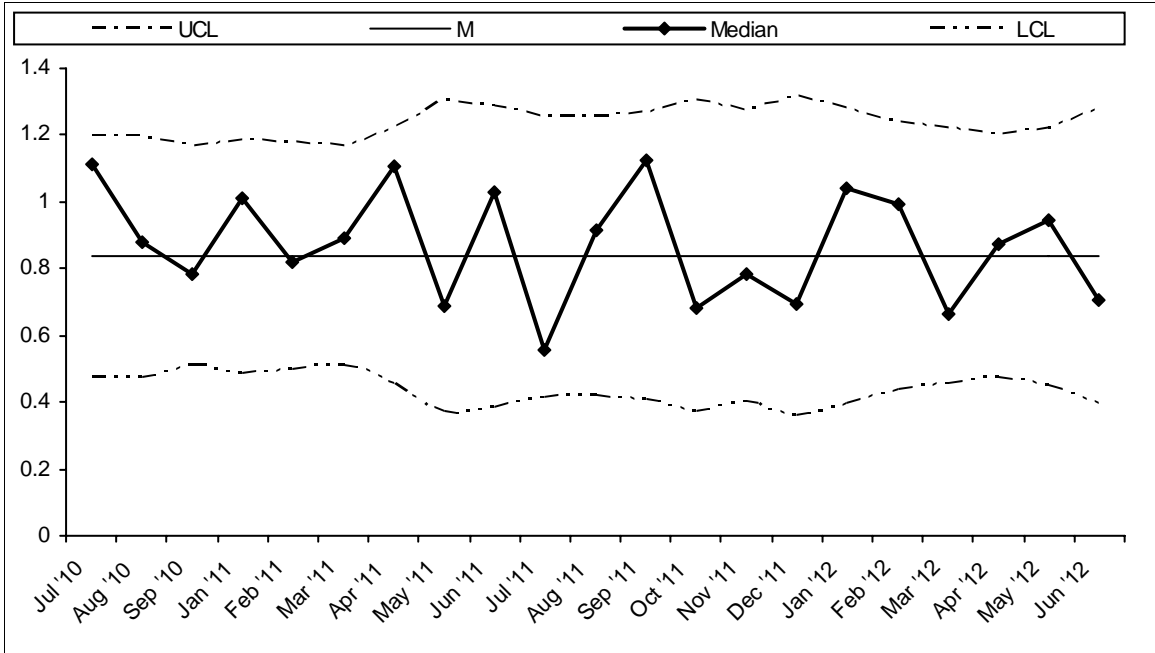
- Mean - Mean of observed values for a month
- M - Overall mean of observed values for all months together
- UCL - upper control limit
- LCL - lower control limit

TJC has established 3 tests to determine whether performance indicated on the X-chart is "in control."

- Test 1:** All monthly data points should be within three standard deviations of the average;
- Test 2:** No more than 7 consecutive monthly data points should be on one side of (above or below) the average;
- Test 3:** No more than 5 consecutive monthly data points should show a steady increase or decrease over time.

A measure in statistical control does not necessarily mean that performance is satisfactory. Results may be stable, yet still indicate poor or good performance. Once results are determined to be in statistical control, they should be compared to external comparison group using a Comparison Chart. If the X-chart indicates that performance is not "in control", the HCO should investigate to determine the underlying or root causes for why the process appears unstable and unpredictable.

Figure 13 - CONTROL CHART BASIS-24 EMOTIONAL LABILITY (X-chart)
BASIS-24 at admission minus BASIS-24 at discharge



Legend: X-chart:

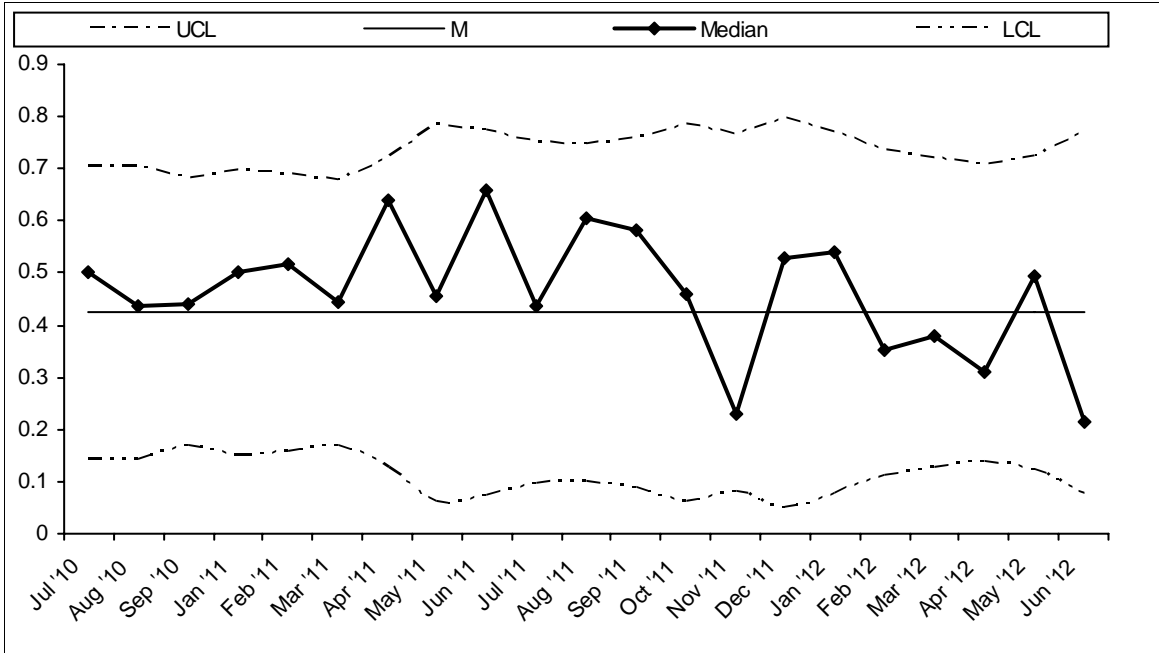
Mean - Mean of observed values for a month
 M - Overall mean of observed values for all months together
 UCL - upper control limit
 LCL - lower control limit

TJC has established 3 tests to determine whether performance indicated on the X-chart is "in control."

- Test 1:** All monthly data points should be within three standard deviations of the average;
- Test 2:** No more than 7 consecutive monthly data points should be on one side of (above or below) the average;
- Test 3:** No more than 5 consecutive monthly data points should show a steady increase or decrease over time.

A measure in statistical control does not necessarily mean that performance is satisfactory. Results may be stable, yet still indicate poor or good performance. Once results are determined to be in statistical control, they should be compared to external comparison group using a Comparison Chart. If the X-chart indicates that performance is not "in control", the HCO should investigate to determine the underlying or root causes for why the process appears unstable and unpredictable.

Figure 14 - CONTROL CHART BASIS-24 PSYCHOSIS (X-chart)
BASIS-24 at admission minus BASIS-24 at discharge



Legend: X-chart:

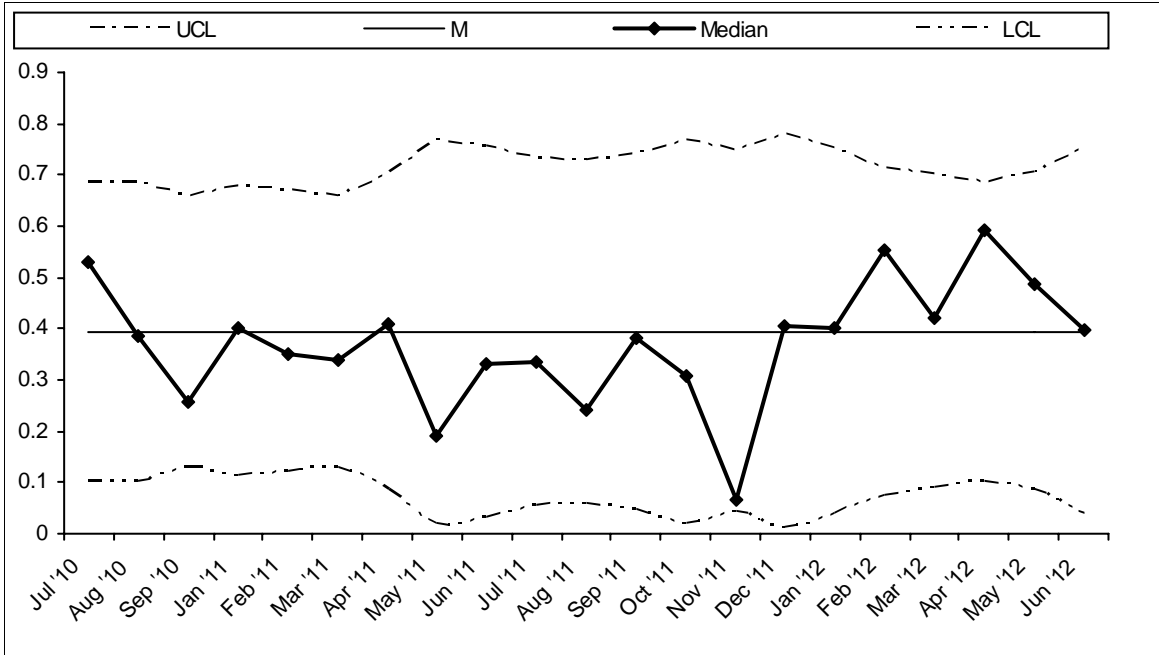
Mean - Mean of observed values for a month
M - Overall mean of observed values for all months together
UCL - upper control limit
LCL - lower control limit

TJC has established 3 tests to determine whether performance indicated on the X-chart is "in control."

- Test 1:** All monthly data points should be within three standard deviations of the average;
- Test 2:** No more than 7 consecutive monthly data points should be on one side of (above or below) the average;
- Test 3:** No more than 5 consecutive monthly data points should show a steady increase or decrease over time.

A measure in statistical control does not necessarily mean that performance is satisfactory. Results may be stable, yet still indicate poor or good performance. Once results are determined to be in statistical control, they should be compared to external comparison group using a Comparison Chart. If the X-chart indicates that performance is not "in control", the HCO should investigate to determine the underlying or root causes for why the process appears unstable and unpredictable.

Figure 15 - CONTROL CHART BASIS-24 SUBSTANCE ABUSE (X-chart)
BASIS-24 at admission minus BASIS-24 at discharge



Legend: X-chart:

Mean - Mean of observed values for a month
M - Overall mean of observed values for all months together
UCL - upper control limit
LCL - lower control limit

TJC has established 3 tests to determine whether performance indicated on the X-chart is "in control."

- Test 1:** All monthly data points should be within three standard deviations of the average;
- Test 2:** No more than 7 consecutive monthly data points should be on one side of (above or below) the average;
- Test 3:** No more than 5 consecutive monthly data points should show a steady increase or decrease over time.

A measure in statistical control does not necessarily mean that performance is satisfactory. Results may be stable, yet still indicate poor or good performance. Once results are determined to be in statistical control, they should be compared to external comparison group using a Comparison Chart. If the X-chart indicates that performance is not "in control", the HCO should investigate to determine the underlying or root causes for why the process appears unstable and unpredictable.

Figure 16 - PATIENT CHARACTERISTICS

		N= 326	#	%
25 Age Group	<= 18		7	2.1
	19 - 24		72	22.1
	25 - 34		58	17.8
	35 - 44		51	15.6
	45 - 54		71	21.8
	55 - 64		45	13.8
	>= 65		22	6.7
26 Gender	Male		160	49.1
	Female		165	50.6
27 Hispanic / Latino	Hispanic or Latino		65	25.2
	Not Hispanic or Latino		193	74.8
28 Race	American Indian		9	4.1
	Asian		7	3.2
	Black or African-American		21	9.5
	White/Caucasian		173	78.3
	Hawaiian or Pacific islander		2	0.9
	Multiracial or other		9	4.1
29 How much school have you completed?	8th grade or less		5	1.7
	Some High school		36	12.6
	High school graduate/GED		52	18.2
	Some college		134	46.9
	4-Yr college grad. or higher		59	20.6
30 Marital Status	Married		108	38.4
	Separated		23	8.2
	Divorced		34	12.1
	Widowed		6	2.1
	Never Married		110	39.1

Sample Hospital, April 2012 to June 2012 (LoC : In Patient)

31 Main source of social support	Wife, husband or partner	125	59.8
	Other Family	151	72.2
	Friends/Roommates	79	37.8
	Community/Church	38	18.2
	Other	19	9.1
	No one	16	7.7
32 Where did you sleep in the past 30 days?	Apartment or house	225	79.8
	Halfway house/ group home....	15	5.3
	School or dormitor	0	0
	Hospital or tetox center	59	20.9
	Nursing home/ Assisted living	2	0.7
	Shelter/ Street	6	2.1
	Jail/ Prison	0	0
	Other	15	5.3
33 At any time in the past 30 days, did you work at a paying job?	No	181	66.1
	Yes, 1-10 hours per week	17	6.2
	Yes, 11-30 hours per week	12	4.4
	Yes, More than 30 hours	64	23.4
34 At any time in the past 30 days, did you work at a volutineer job?	No	257	91.1
	Yes, 1-10 hours per week	19	6.7
	Yes, 11-30 hours per week	3	1.1
	Yes, More than 30 hours	3	1.1
35 At any time in the past days, were you a student in a high school, job or college degree program?	Yes	36	12.8
	No	245	87.2
36 Do you now receive disability benefits?	No	200	72.7
	Yes, for medical reasons	50	18.2
	Yes, for psuchiatic reasons	32	11.6
	Yes, for substance abuse	0	0