

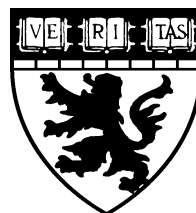
**McLean eBASIS *plus*™**

**Sample Hospital (0000)  
Report For Qtr 1 2012  
HBIPS Core Measures**

---

McLean Hospital

115 Mill Street  
Belmont, MA 02478



Department of Mental Health Services Evaluation

Tel: 617-855-3797  
Fax: 617-855-2948

Website: [www.basisurvey.org](http://www.basisurvey.org)  
Email: [basisAdmin@mclean.harvard.edu](mailto:basisAdmin@mclean.harvard.edu)

---

## Hospital Based Inpatient Psychiatric Measures (HBIPS)

### **#1: Admission Screening (Proportion)**

The numerator is based on the number of psychiatric inpatients with admission screening within the first three days of admission for all of the following: risk of violence to self or others; substance use; psychological trauma history; and patient strengths. The denominator is based on the number of psychiatric inpatient discharges. Direction of Improvement: Increase in

### **#2: Physical Restraint (Ratio)**

The numerator is based on the total number of hours that all psychiatric inpatients were maintained in physical restraint. The denominator is based on the number of psychiatric inpatient days. Direction of Improvement: Decreased in Rate/Value.

### **#3: Seclusion (Ratio)**

The numerator is based on the total number of hours that all psychiatric inpatients were held in seclusion. The denominator is based on the number of psychiatric inpatient days. Direction of Improvement: Decreased in Rate/Value.

### **#4 Multiple Antipsychotic Medications at Discharge (Proportion)**

The numerator is based on the psychiatric inpatients discharged on two or more routinely scheduled antipsychotic medications. The denominator is based on the psychiatric inpatient discharges. Direction of Improvement: Decreased in Rate/Value.

### **#5 Multiple Antipsychotic Medications at Discharge with Appropriate Justification (Proportion)**

The numerator is based on the psychiatric inpatients discharged on two or more routinely scheduled antipsychotic medications with appropriate justification. The denominator is based on the psychiatric inpatients discharged on two or more routinely scheduled antipsychotic

### **#6. Post Discharge Continuing Care Plan (Proportion)**

The numerator is based on the number of psychiatric inpatients for whom the post discharge continuing care plan is created and contains all of the following: reason for hospitalization, principal discharge diagnosis, discharge medications and next level of care recommendations. The denominator is based on the number of psychiatric inpatient discharges. Direction of Improvement: Increase in rate/value.

### **#7. Post Discharge Continuing Care Plan Transmitted (Proportion)**

The numerator is based on the number of psychiatric inpatients for whom the post discharge continuing care plan was transmitted to the next level of care. The denominator is based on the number of psychiatric inpatient discharges. Direction of Improvement: Increase in rate/value.

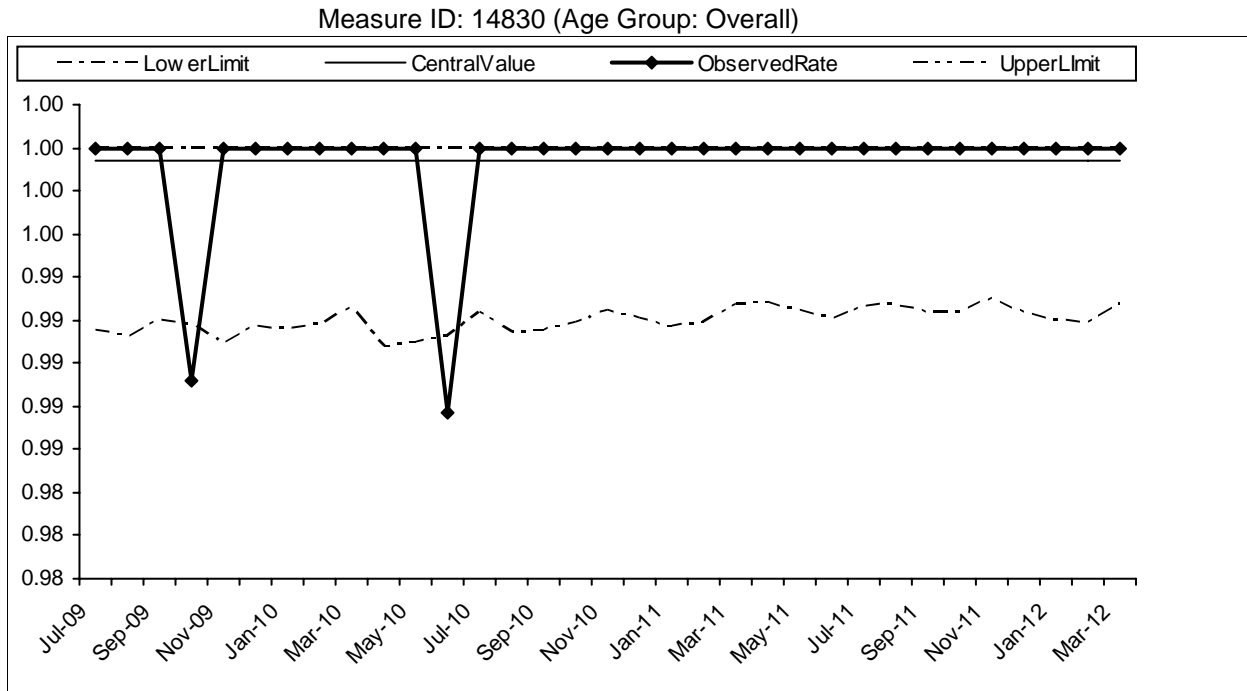
## HBIPS SUMMARY DATA

| Measure  | Measure ID | Age Group | Denominator | Numerator | Rate | Data issue |
|--|------------|-----------|-------------|-----------|------|------------|
| Admission Screening (Proportion/Increase in Rate)  | 14830      | Overall   | 316         | 316       | 1    | --         |
|  | 14831      | 1-12      | 2           | 2         | 1    | YES        |
|  | 14832      | 13-17     | 76          | 76        | 1    | --         |
|  | 14833      | 18-64     | 202         | 202       | 1    | --         |
|  | 14834      | 65+       | 36          | 36        | 1    | --         |
| Hours of Physical Restraint Use (Ratio/Decrease in Rate)   | 14835      | Overall   | 195744      | 10.67     | 0.05 | --         |
|  | 14836      | 1-12      | 600         | 0         | 0    | --         |
|  | 14837      | 13-17     | 42480       | 4.92      | 0.12 | --         |
|  | 14838      | 18-64     | 144432      | 5.75      | 0.04 | --         |
|  | 14839      | 65+       | 8232        | 0         | 0    | --         |
| Hours of Seclusion Use (Ratio/Decrease in Rate)  | 14840      | Overall   | 195744      | 10.67     | 0.05 | --         |
|  | 14841      | 1-12      | 600         | 0         | 0    | --         |
|  | 14842      | 13-17     | 42480       | 4.92      | 0.12 | --         |
|  | 14843      | 18-64     | 144432      | 5.75      | 0.04 | --         |
|  | 14844      | 65+       | 8232        | 0         | 0    | --         |
| Patients Discharged on Multiple Antipsychotic Medications (Proportion/Decrease in Rate)                                | 14845      | Overall   | 300         | 6         | 0.02 | --         |
|  | 14846      | 1-12      | 4           | 0         | 0    | --         |
|  | 14847      | 13-17     | 66          | 1         | 0.02 | --         |
|  | 14848      | 18-64     | 203         | 5         | 0.02 | --         |
|  | 14849      | 65+       | 27          | 0         | 0    | --         |
| Patients Discharged on Multiple Antipsychotic Medications with Appropriate Justification (Proportion/Increase in Rate) | 14850      | Overall   | 6           | 0         | 0    | YES        |
|  | 14851      | 1-12      | 0           | 0         | 0    | YES        |
|  | 14852      | 13-17     | 1           | 0         | 0    | YES        |
|  | 14853      | 18-64     | 5           | 0         | 0    | YES        |
|  | 14854      | 65+       | 0           | 0         | 0    | YES        |

**HBIPS SUMMARY DATA**

| Measure  | Measure ID | Age Group | Denominator | Numerator | Rate | Data issue |
|--|------------|-----------|-------------|-----------|------|------------|
| Post Discharge Continuing Care Plan Created (Proportion/Increase in Rate)  | 14855      | Overall   | 421         | 421       | 1    | --         |
|  | 14856      | 1-12      | 8           | 8         | 1    | --         |
|  | 14857      | 13-17     | 101         | 101       | 1    | --         |
|  | 14858      | 18-64     | 264         | 264       | 1    | --         |
|  | 14859      | 65+       | 48          | 48        | 1    | --         |
| Post Discharge Continuing Care Plan Transmitted to Next Level of Care Provider Upon Discharge (Proportion/Increase | 14860      | Overall   | 421         | 413       | 0.98 | --         |
|  | 14861      | 1-12      | 8           | 8         | 1    | --         |
|  | 14862      | 13-17     | 101         | 97        | 0.96 | --         |
|  | 14863      | 18-64     | 264         | 261       | 0.99 | --         |
|  | 14864      | 65+       | 48          | 47        | 0.98 | --         |

FIGURE J 5 ADMISSION SCREENING (PROPORTION/INCREASE IN RATE)



TJC has established 3 tests to determine whether performance indicated on the U-chart is “in control.”

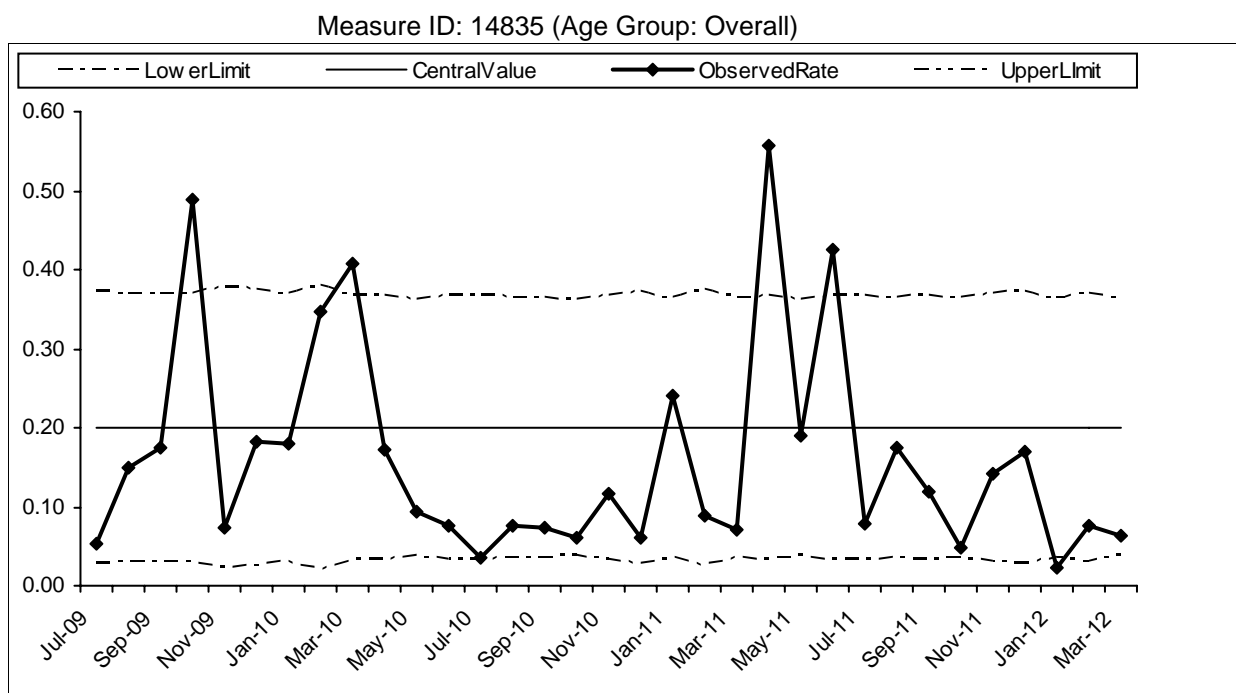
- Test 1:** All monthly data points should be within three standard deviations of the average;
- Test 2:** No more than 7 consecutive monthly data points should be on one side of (above or below) the average;
- Test 3:** No more than 5 consecutive monthly data points should show a steady increase or decrease over time.

A measure in statistical control does not necessarily mean that performance is satisfactory. Results may be stable, yet still indicate poor or good performance. Once results are determined to be in statistical control, they should be compared to external comparison group using a Comparison Chart. If the M-chart indicates that performance is not “in control”, the HCO should investigate to determine the underlying or root causes for why the process appears unstable and unpredictable.

Admission Screening: Monthly Data Points

| Year | Month | # of Denominator Cases | # of Numerator Cases | Observed Rate | Central Line | Upper Control Limit | Lower Control Limit | Test Violation |
|------|-------|------------------------|----------------------|---------------|--------------|---------------------|---------------------|----------------|
| 2011 | Apr   | 124                    | 124                  | 1             | 0.9994       | 1                   | 0.9928              | 2              |
| 2011 | May   | 109                    | 109                  | 1             | 0.9994       | 1                   | 0.9924              | 2              |
| 2011 | Jun   | 101                    | 101                  | 1             | 0.9994       | 1                   | 0.9921              | 2              |
| 2011 | Jul   | 116                    | 116                  | 1             | 0.9994       | 1                   | 0.9926              | 2              |
| 2011 | Aug   | 122                    | 122                  | 1             | 0.9994       | 1                   | 0.9927              | 2              |
| 2011 | Sep   | 107                    | 107                  | 1             | 0.9994       | 1                   | 0.9923              |                |
| 2011 | Oct   | 107                    | 107                  | 1             | 0.9994       | 1                   | 0.9923              |                |
| 2011 | Nov   | 131                    | 131                  | 1             | 0.9994       | 1                   | 0.993               |                |
| 2011 | Dec   | 106                    | 106                  | 1             | 0.9994       | 1                   | 0.9923              |                |
| 2012 | Jan   | 99                     | 99                   | 1             | 0.9994       | 1                   | 0.992               |                |
| 2012 | Feb   | 97                     | 97                   | 1             | 0.9994       | 1                   | 0.9919              |                |
| 2012 | Mar   | 120                    | 120                  | 1             | 0.9994       | 1                   | 0.9927              |                |

FIGURE J 6 HOURS OF PHYSICAL RESTRAINT USE (RATIO/DECREASE IN RATE)



TJC has established 3 tests to determine whether performance indicated on the U-chart is "in control."

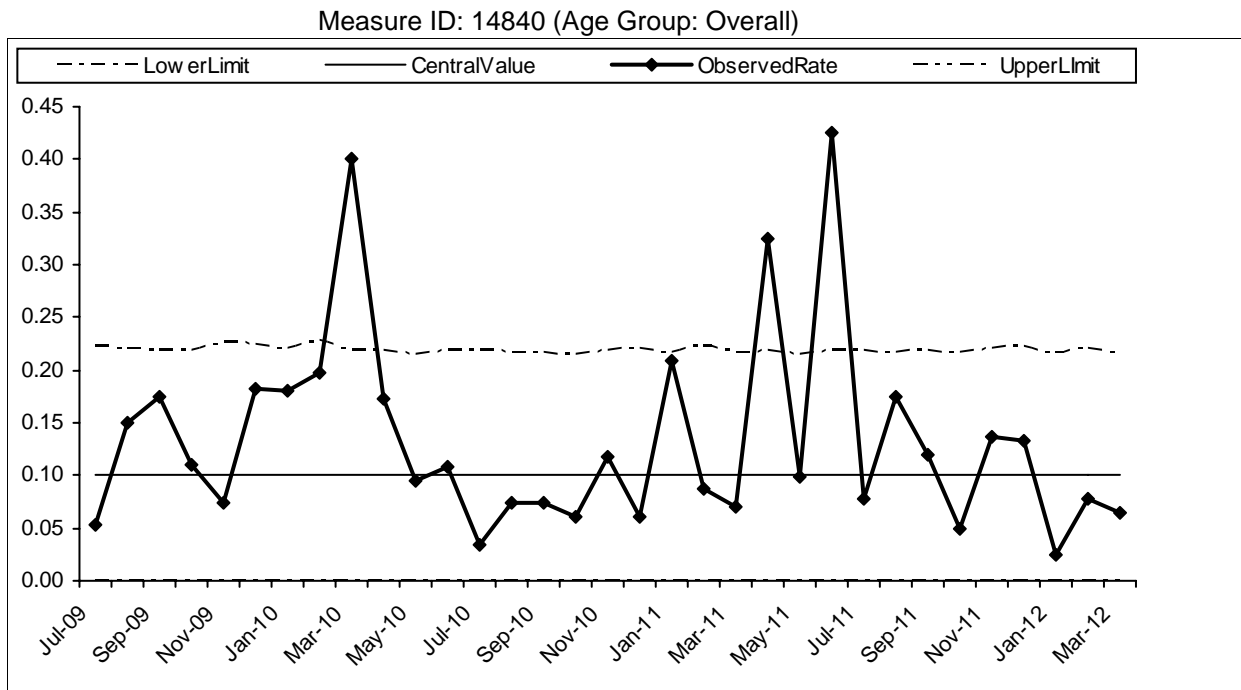
- Test 1:** All monthly data points should be within three standard deviations of the average;
- Test 2:** No more than 7 consecutive monthly data points should be on one side of (above or below) the average;
- Test 3:** No more than 5 consecutive monthly data points should show a steady increase or decrease over time.

A measure in statistical control does not necessarily mean that performance is satisfactory. Results may be stable, yet still indicate poor or good performance. Once results are determined to be in statistical control, they should be compared to external comparison group using a Comparison Chart. If the M-chart indicates that performance is not "in control", the HCO should investigate to determine the underlying or root causes for why the process appears unstable and unpredictable.

Hours Of Physical Restraint Use: Monthly Data Points

| Year | Month | # of Denominator Cases | # of Numerator Cases | Observed Rate | Central Line | Upper Control Limit | Lower Control Limit | Test Violation |
|------|-------|------------------------|----------------------|---------------|--------------|---------------------|---------------------|----------------|
| 2011 | Apr   | 65088                  | 36.1667              | 0.556         | 0.2          | 0.3663              | 0.0337              | 1              |
| 2011 | May   | 67920                  | 12.9167              | 0.19          | 0.2          | 0.3628              | 0.0372              |                |
| 2011 | Jun   | 63768                  | 27.0833              | 0.425         | 0.2          | 0.368               | 0.032               | 1              |
| 2011 | Jul   | 64584                  | 5.05                 | 0.078         | 0.2          | 0.3669              | 0.0331              | 2              |
| 2011 | Aug   | 66480                  | 11.6667              | 0.175         | 0.2          | 0.3645              | 0.0355              | 2              |
| 2011 | Sep   | 64512                  | 7.6667               | 0.119         | 0.2          | 0.367               | 0.033               |                |
| 2011 | Oct   | 65808                  | 3.25                 | 0.049         | 0.2          | 0.3654              | 0.0346              |                |
| 2011 | Nov   | 62664                  | 8.8667               | 0.141         | 0.2          | 0.3695              | 0.0305              |                |
| 2011 | Dec   | 60264                  | 10.25                | 0.17          | 0.2          | 0.3728              | 0.0272              |                |
| 2012 | Jan   | 66072                  | 1.5833               | 0.024         | 0.2          | 0.3651              | 0.0349              | 1              |
| 2012 | Feb   | 61968                  | 4.75                 | 0.077         | 0.2          | 0.3704              | 0.0296              |                |
| 2012 | Mar   | 67704                  | 4.3333               | 0.064         | 0.2          | 0.3631              | 0.0369              |                |

FIGURE J 7 HOURS OF SECLUSION USE (RATIO/DECREASE IN RATE)



TJC has established 3 tests to determine whether performance indicated on the U-chart is "in control."

- Test 1:** All monthly data points should be within three standard deviations of the average;
- Test 2:** No more than 7 consecutive monthly data points should be on one side of (above or below) the average;
- Test 3:** No more than 5 consecutive monthly data points should show a steady increase or decrease over time.

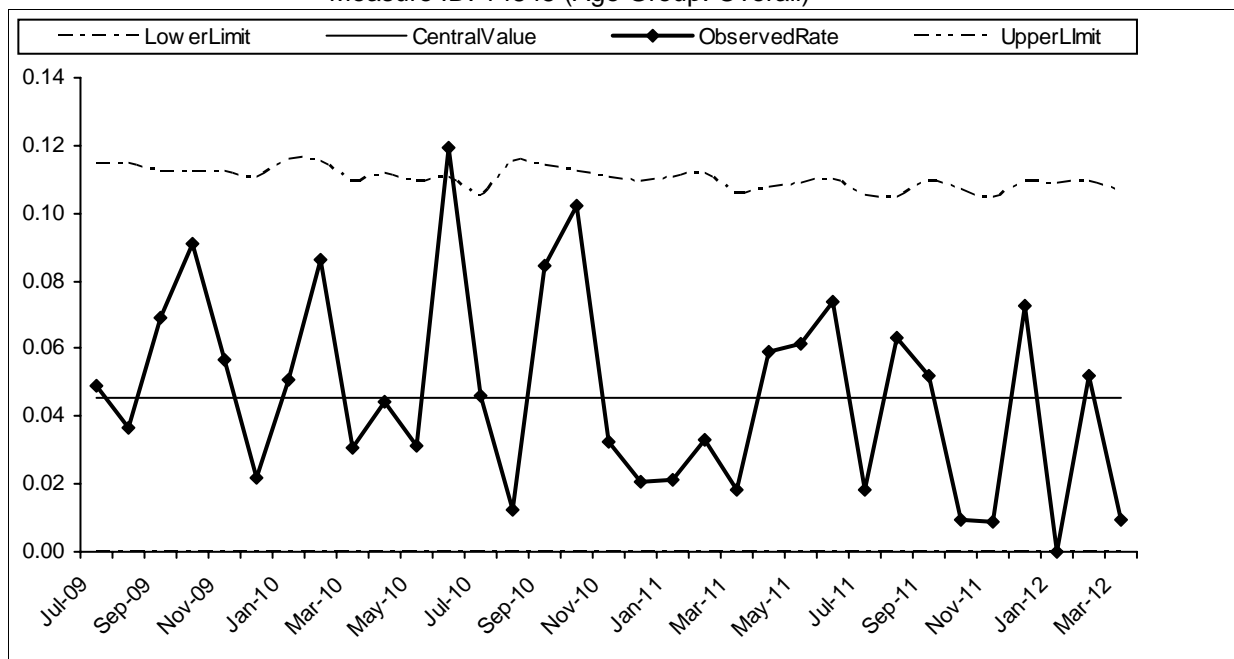
A measure in statistical control does not necessarily mean that performance is satisfactory. Results may be stable, yet still indicate poor or good performance. Once results are determined to be in statistical control, they should be compared to external comparison group using a Comparison Chart. If the M-chart indicates that performance is not "in control", the HCO should investigate to determine the underlying or root causes for why the process appears unstable and unpredictable.

**Hours Of Seclusion Use: Monthly Data Points**

| Year | Month | # of Denominator Cases | # of Numerator Cases | Observed Rate | Central Line | Upper Control Limit | Lower Control Limit | Test Violation |
|------|-------|------------------------|----------------------|---------------|--------------|---------------------|---------------------|----------------|
| 2011 | Apr   | 65088                  | 21.1667              | 0.325         | 0.1          | 0.2176              | 0                   | 1              |
| 2011 | May   | 67920                  | 6.6667               | 0.098         | 0.1          | 0.2151              | 0                   | 0              |
| 2011 | Jun   | 63768                  | 27.0833              | 0.425         | 0.1          | 0.2188              | 0                   | 1              |
| 2011 | Jul   | 64584                  | 5.05                 | 0.078         | 0.1          | 0.218               | 0                   | 0              |
| 2011 | Aug   | 66480                  | 11.6667              | 0.175         | 0.1          | 0.2164              | 0                   | 0              |
| 2011 | Sep   | 64512                  | 7.6667               | 0.119         | 0.1          | 0.2181              | 0                   | 0              |
| 2011 | Oct   | 65808                  | 3.25                 | 0.049         | 0.1          | 0.2169              | 0                   | 0              |
| 2011 | Nov   | 62664                  | 8.5333               | 0.136         | 0.1          | 0.2198              | 0                   | 0              |
| 2011 | Dec   | 60264                  | 8                    | 0.133         | 0.1          | 0.2222              | 0                   | 0              |
| 2012 | Jan   | 66072                  | 1.5833               | 0.024         | 0.1          | 0.2167              | 0                   | 0              |
| 2012 | Feb   | 61968                  | 4.75                 | 0.077         | 0.1          | 0.2205              | 0                   | 0              |
| 2012 | Mar   | 67704                  | 4.3333               | 0.064         | 0.1          | 0.2153              | 0                   | 0              |

**FIGURE J 8 PATIENTS DISCHARGED ON MULTIPLE ANTIPSYCHOTIC MEDICATIONS  
(PROPORTION/DECREASE IN RATE)**

Measure ID: 14845 (Age Group: Overall)



**TJC has established 3 tests to determine whether performance indicated on the U-chart is "in control."**

- Test 1:** All monthly data points should be within three standard deviations of the average;
- Test 2:** No more than 7 consecutive monthly data points should be on one side of (above or below) the average;
- Test 3:** No more than 5 consecutive monthly data points should show a steady increase or decrease over time.

A measure in statistical control does not necessarily mean that performance is satisfactory. Results may be stable, yet still indicate poor or good performance. Once results are determined to be in statistical control, they should be compared to external comparison group using a Comparison Chart. If the M-chart indicates that performance is not "in control", the HCO should investigate to determine the underlying or root causes for why the process appears unstable and unpredictable.

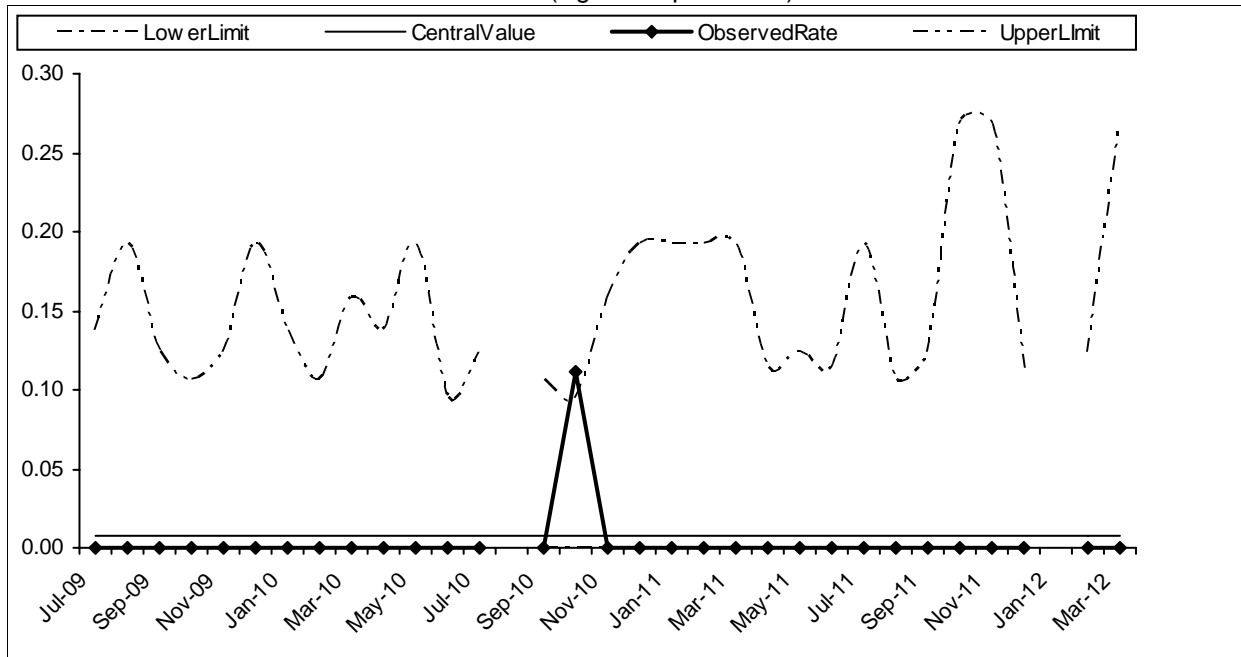
**Patients Discharged On Multiple Antipsychotic Medications: Monthly Data Points**

| Year | Month | # of Denominator Cases | # of Numerator Cases | Observed Rate | Central Line | Upper Control Limit | Lower Control Limit | Test Violation |
|------|-------|------------------------|----------------------|---------------|--------------|---------------------|---------------------|----------------|
| 2011 | Apr   | 102                    | 6                    | 0.0588        | 0.0455       | 0.1074              | 0                   | 0              |
| 2011 | May   | 98                     | 6                    | 0.0612        | 0.0455       | 0.1087              | 0                   | 0              |
| 2011 | Jun   | 95                     | 7                    | 0.0737        | 0.0455       | 0.1096              | 0                   | 0              |
| 2011 | Jul   | 109                    | 2                    | 0.0183        | 0.0455       | 0.1054              | 0                   | 0              |
| 2011 | Aug   | 111                    | 7                    | 0.0631        | 0.0455       | 0.1048              | 0                   | 0              |
| 2011 | Sep   | 96                     | 5                    | 0.0521        | 0.0455       | 0.1093              | 0                   | 0              |
| 2011 | Oct   | 103                    | 1                    | 0.0097        | 0.0455       | 0.1071              | 0                   | 0              |
| 2011 | Nov   | 112                    | 1                    | 0.0089        | 0.0455       | 0.1046              | 0                   | 0              |
| 2011 | Dec   | 96                     | 7                    | 0.0729        | 0.0455       | 0.1093              | 0                   | 0              |
| 2012 | Jan   | 98                     | 0                    | 0             | 0.0455       | 0.1087              | 0                   | 0              |
| 2012 | Feb   | 96                     | 5                    | 0.0521        | 0.0455       | 0.1093              | 0                   | 0              |
| 2012 | Mar   | 106                    | 1                    | 0.0094        | 0.0455       | 0.1062              | 0                   | 0              |



**FIGURE J 9 PATIENTS DISCHARGED ON MULTIPLE ANTIPSYCHOTIC MEDICATIONS WITH APPROPRIATE JUSTIFICATION (PROPORTION/INCREASE IN RATE)**

Measure ID: 14850 (Age Group: Overall)



TJC has established 3 tests to determine whether performance indicated on the U-chart is “in control.”

- Test 1:** All monthly data points should be within three standard deviations of the average;
- Test 2:** No more than 7 consecutive monthly data points should be on one side of (above or below) the average;
- Test 3:** No more than 5 consecutive monthly data points should show a steady increase or decrease over time.

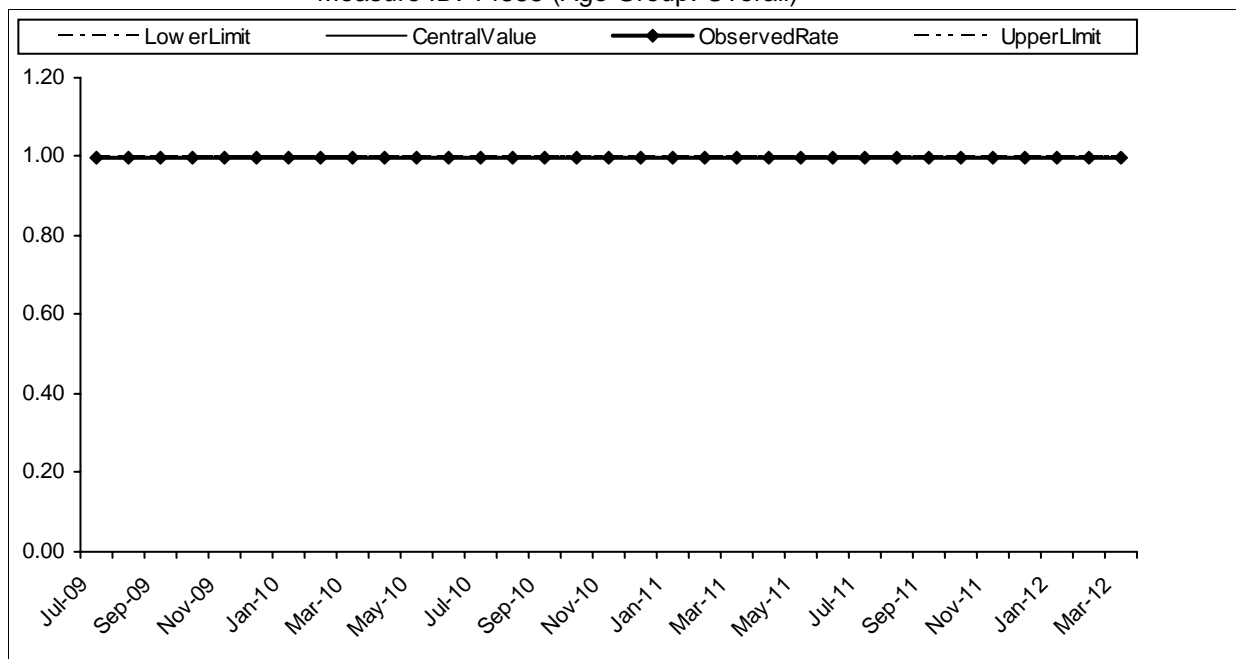
A measure in statistical control does not necessarily mean that performance is satisfactory. Results may be stable, yet still indicate poor or good performance. Once results are determined to be in statistical control, they should be compared to external comparison group using a Comparison Chart. If the M-chart indicates that performance is not “in control”, the HCO should investigate to determine the underlying or root causes for why the process appears unstable and unpredictable.

**Patients Discharged On Multiple Antipsychotic Medications With Appropriate Justification: Monthly Data Points**

| Year | Month | # of Denominator Cases | # of Numerator Cases | Observed Rate | Central Line | Upper Control Limit | Lower Control Limit | Test Violation |
|------|-------|------------------------|----------------------|---------------|--------------|---------------------|---------------------|----------------|
| 2011 | Apr   | 6                      | 0                    | 0             | 0.0076       | 0.114               | 0                   | 2              |
| 2011 | May   | 5                      | 0                    | 0             | 0.0076       | 0.1241              | 0                   | 2              |
| 2011 | Jun   | 6                      | 0                    | 0             | 0.0076       | 0.114               | 0                   | 2              |
| 2011 | Jul   | 2                      | 0                    | 0             | 0.0076       | 0.1918              | 0                   | 2              |
| 2011 | Aug   | 7                      | 0                    | 0             | 0.0076       | 0.1061              | 0                   |                |
| 2011 | Sep   | 5                      | 0                    | 0             | 0.0076       | 0.1241              | 0                   |                |
| 2011 | Oct   | 1                      | 0                    | 0             | 0.0076       | 0.2681              | 0                   |                |
| 2011 | Nov   | 1                      | 0                    | 0             | 0.0076       | 0.2681              | 0                   |                |
| 2011 | Dec   | 6                      | 0                    | 0             | 0.0076       | 0.114               | 0                   |                |
| 2012 | Jan   | 0                      | 0                    | 0             | 0.0076       |                     |                     |                |
| 2012 | Feb   | 5                      | 0                    | 0             | 0.0076       | 0.1241              | 0                   |                |
| 2012 | Mar   | 1                      | 0                    | 0             | 0.0076       | 0.2681              | 0                   |                |

**FIGURE J 10 POST DISCHARGE CONTINUING CARE PLAN CREATED (PROPORTION/INCREASE IN RATE)**

Measure ID: 14855 (Age Group: Overall)



**TJC has established 3 tests to determine whether performance indicated on the U-chart is “in control.”**

- Test 1:** All monthly data points should be within three standard deviations of the average;
- Test 2:** No more than 7 consecutive monthly data points should be on one side of (above or below) the average;
- Test 3:** No more than 5 consecutive monthly data points should show a steady increase or decrease over time.

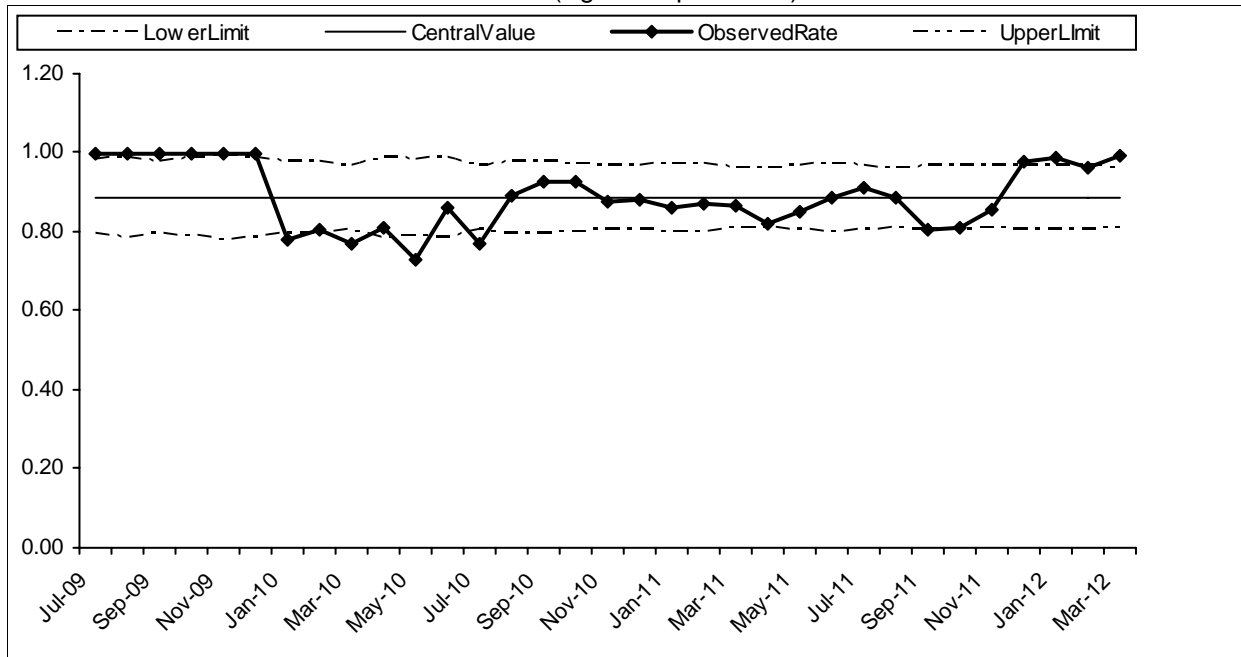
A measure in statistical control does not necessarily mean that performance is satisfactory. Results may be stable, yet still indicate poor or good performance. Once results are determined to be in statistical control, they should be compared to external comparison group using a Comparison Chart. If the M-chart indicates that performance is not “in control”, the HCO should investigate to determine the underlying or root causes for why the process appears unstable and unpredictable.

**Post Discharge Continuing Care Plan Created: Monthly Data Points**

| Year | Month | # of Denominator Cases | # of Numerator Cases | Observed Rate | Central Line | Upper Control Limit | Lower Control Limit | Test Violation |
|------|-------|------------------------|----------------------|---------------|--------------|---------------------|---------------------|----------------|
| 2011 | Apr   | 161                    | 161                  | 1             | 1            | 1                   | 1                   | 1              |
| 2011 | May   | 141                    | 141                  | 1             | 1            | 1                   | 1                   | 1              |
| 2011 | Jun   | 129                    | 129                  | 1             | 1            | 1                   | 1                   | 1              |
| 2011 | Jul   | 143                    | 143                  | 1             | 1            | 1                   | 1                   | 1              |
| 2011 | Aug   | 152                    | 152                  | 1             | 1            | 1                   | 1                   | 1              |
| 2011 | Sep   | 134                    | 134                  | 1             | 1            | 1                   | 1                   | 1              |
| 2011 | Oct   | 144                    | 144                  | 1             | 1            | 1                   | 1                   | 1              |
| 2011 | Nov   | 148                    | 148                  | 1             | 1            | 1                   | 1                   | 1              |
| 2011 | Dec   | 138                    | 138                  | 1             | 1            | 1                   | 1                   | 1              |
| 2012 | Jan   | 135                    | 135                  | 1             | 1            | 1                   | 1                   | 1              |
| 2012 | Feb   | 134                    | 134                  | 1             | 1            | 1                   | 1                   | 1              |
| 2012 | Mar   | 152                    | 152                  | 1             | 1            | 1                   | 1                   | 1              |

**FIGURE J 11 POST DISCHARGE CONTINUING CARE PLAN TRANSMITTED TO NEXT LEVEL OF CARE PROVIDER UPON DISCHARGE (PROPORTION/INCREASE IN RATE)**

Measure ID: 14860 (Age Group: Overall)



TJC has established 3 tests to determine whether performance indicated on the U-chart is “in control.”

- Test 1:** All monthly data points should be within three standard deviations of the average;
- Test 2:** No more than 7 consecutive monthly data points should be on one side of (above or below) the average;
- Test 3:** No more than 5 consecutive monthly data points should show a steady increase or decrease over time.

A measure in statistical control does not necessarily mean that performance is satisfactory. Results may be stable, yet still indicate poor or good performance. Once results are determined to be in statistical control, they should be compared to external comparison group using a Comparison Chart. If the M-chart indicates that performance is not “in control”, the HCO should investigate to determine the underlying or root causes for why the process appears unstable and unpredictable.

**Post Discharge Continuing Care Plan Transmitted To Next Level Of Care Provider Upon Discharge: Monthly Data Points**

| Year | Month | # of Denominator Cases | # of Numerator Cases | Observed Rate | Central Line | Upper Control Limit | Lower Control Limit | Test Violation |
|------|-------|------------------------|----------------------|---------------|--------------|---------------------|---------------------|----------------|
| 2011 | Apr   | 161                    | 132                  | 0.8199        | 0.8863       | 0.9614              | 0.8112              |                |
| 2011 | May   | 141                    | 120                  | 0.8511        | 0.8863       | 0.9665              | 0.8061              |                |
| 2011 | Jun   | 129                    | 114                  | 0.8837        | 0.8863       | 0.9701              | 0.8025              |                |
| 2011 | Jul   | 143                    | 130                  | 0.9091        | 0.8863       | 0.9659              | 0.8067              |                |
| 2011 | Aug   | 152                    | 135                  | 0.8882        | 0.8863       | 0.9635              | 0.8091              |                |
| 2011 | Sep   | 134                    | 108                  | 0.806         | 0.8863       | 0.9686              | 0.804               |                |
| 2011 | Oct   | 144                    | 117                  | 0.8125        | 0.8863       | 0.9657              | 0.8069              |                |
| 2011 | Nov   | 148                    | 127                  | 0.8581        | 0.8863       | 0.9646              | 0.808               |                |
| 2011 | Dec   | 138                    | 135                  | 0.9783        | 0.8863       | 0.9674              | 0.8052              | 1              |
| 2012 | Jan   | 135                    | 133                  | 0.9852        | 0.8863       | 0.9683              | 0.8043              | 1              |
| 2012 | Feb   | 134                    | 129                  | 0.9627        | 0.8863       | 0.9686              | 0.804               |                |
| 2012 | Mar   | 152                    | 151                  | 0.9934        | 0.8863       | 0.9635              | 0.8091              | 1              |