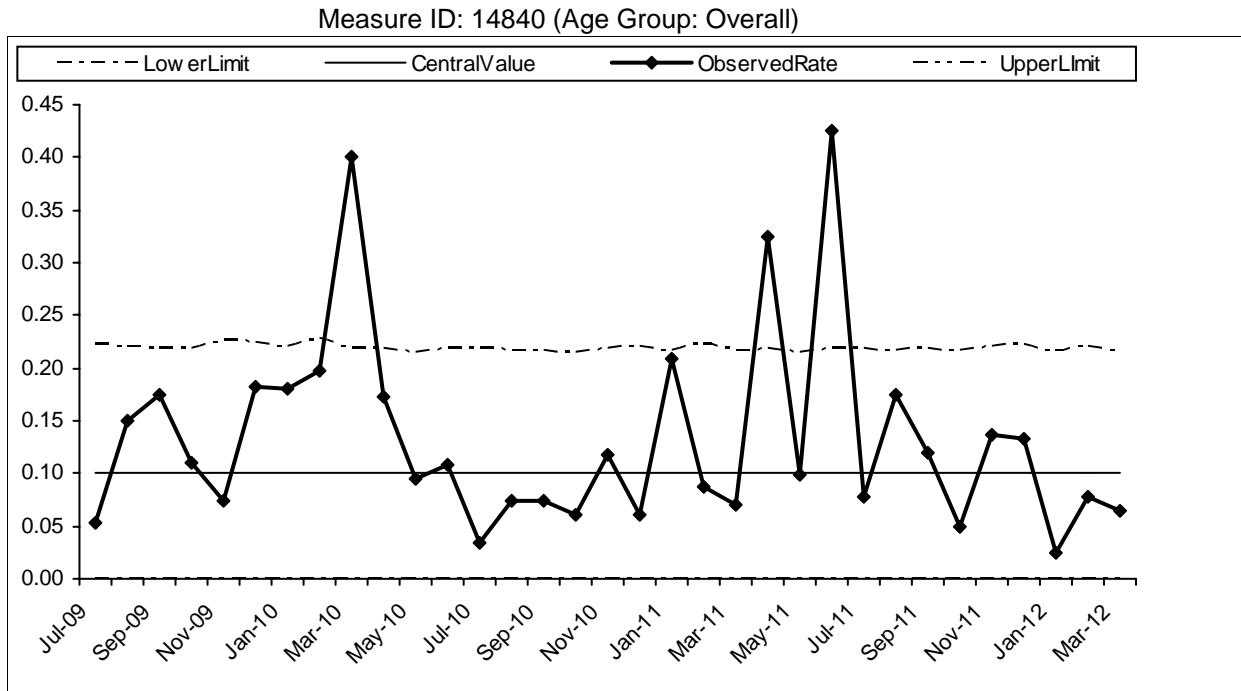


FIGURE J 7 HOURS OF SECLUSION USE (RATIO/DECREASE IN RATE)



TJC has established 3 tests to determine whether performance indicated on the U-chart is "in control."

- Test 1:** All monthly data points should be within three standard deviations of the average;
- Test 2:** No more than 7 consecutive monthly data points should be on one side of (above or below) the average;
- Test 3:** No more than 5 consecutive monthly data points should show a steady increase or decrease over time.

A measure in statistical control does not necessarily mean that performance is satisfactory. Results may be stable, yet still indicate poor or good performance. Once results are determined to be in statistical control, they should be compared to external comparison group using a Comparison Chart. If the M-chart indicates that performance is not "in control", the HCO should investigate to determine the underlying or root causes for why the process appears unstable and unpredictable.

Hours Of Seclusion Use: Monthly Data Points

Year	Month	# of Denominator Cases	# of Numerator Cases	Observed Rate	Central Line	Upper Control Limit	Lower Control Limit	Test Violation
2011	Apr	65088	21.1667	0.325	0.1	0.2176	0.02176	0 1
2011	May	67920	6.6667	0.098	0.1	0.2151	0.02151	0
2011	Jun	63768	27.0833	0.425	0.1	0.2188	0.02188	0 1
2011	Jul	64584	5.05	0.078	0.1	0.218	0.0218	0
2011	Aug	66480	11.6667	0.175	0.1	0.2164	0.02164	0
2011	Sep	64512	7.6667	0.119	0.1	0.2181	0.02181	0
2011	Oct	65808	3.25	0.049	0.1	0.2169	0.02169	0
2011	Nov	62664	8.5333	0.136	0.1	0.2198	0.02198	0
2011	Dec	60264	8	0.133	0.1	0.2222	0.02222	0
2012	Jan	66072	1.5833	0.024	0.1	0.2167	0.02167	0
2012	Feb	61968	4.75	0.077	0.1	0.2205	0.02205	0
2012	Mar	67704	4.3333	0.064	0.1	0.2153	0.02153	0